



WCU WREB Candidate and Patient Protocols for August 19-21, 2020 Clinical examination

Pre-arrival preparation:

The practice of dental hygiene services involves the use of ultrasonic scalers and air-water syringes which produce aerosols. This places dental hygienists in the very high-risk exposure category. For this reason, you will be required to use a N95 (not KN95) mask with a face shield during your clinical examination. Respirator use must follow OSHA Respiratory Protection standard (29 CFR 1910.134) This requires Healthcare Providers to be medically cleared and fit tested. Due to fitting protocols, WCU will NOT be providing or fitting candidates for N95 masks; therefore, you are to come to the examination with your own pre-fitted N95 mask for use during the examination. WCU will provide all other necessary PPE, including face shields. We cannot guarantee that our face shield will fit correctly around your loupes/light assembly; therefore, we highly recommend you provide your own face shield so as to not struggle with a shield that does not fit properly around your loupes/light.

Arrival to campus:

Parking is provided on campus. Upon arrival to the campus, please check with the parking attendant for location of your parking. Once you arrive, please check in with staff who will prescreen for COVID-19 before being permitted to enter the building. You and your patient must have a mask on when you approach our clinic staff. You and your patient will be screened for COVID-19 symptoms and your temperature will be taken. You must both pass the screening procedure. Due to social distancing and patient seating prior to the exam, only the candidate and patient will be permitted to enter the building. Any other guest or support person will be required to wait in the car. Absolutely no children will be permitted in the building. You must honor social distancing recommendations and remain 6 feet from others in hallways and reception areas.

During test:

Our biggest concern is the spread of aerosols. Candidates and patients will be seated in clinic to allow adequate social distancing. Due to aerosol production, the use of ultrasonic scalers is not recommended during this time. If you choose to use your ultrasonic, we recommend that you perform selective debridement with the ultrasonic scaler and you must use high volume suction due to the aerosol production.

After exam:

Remove and discard disposable respirators and all PPE and perform proper hand hygiene. Follow the posted procedures when removing and discarding PPE.



COVID-19 does not distinguish between nationality, race or geographic origin. To prevent the spread of COVID-19 and reduce the potential risk of exposure to our faculty, staff, students, and visitors, we are conducting a simple screening questionnaire. Your participation is important to help us take precautionary measures to protect you and everyone at the West Coast University Dental Hygiene Clinic.

Thank you for your time

Self-Declaration by Visitor	
1	<p>Have you traveled outside the United States, including any cruises, within the last 21 days?</p> <p style="text-align: center;"><input type="checkbox"/> Yes <input type="checkbox"/> No</p> <p>If yes, where and when have you traveled? _____</p>
2	<p>Have you had close contact with or cared for someone diagnosed with COVID-19 within the last 21 days?</p> <p style="text-align: center;"><input type="checkbox"/> Yes <input type="checkbox"/> No</p>
3	<p>Have you experienced any cold or flu-like symptoms in the last 14 days (including upper respiratory symptoms such runny nose, nasal congestion, raspy throat, sore throat, dry or wet cough or urge to cough, difficulty breathing), body aches, exhaustion, fever, red or painful eyes, vomiting or diarrhea,) or lived with or cared for any person who has experienced any cold or flu-like symptoms in the last 14 days?</p> <p style="text-align: center;"><input type="checkbox"/> Yes <input type="checkbox"/> No</p>

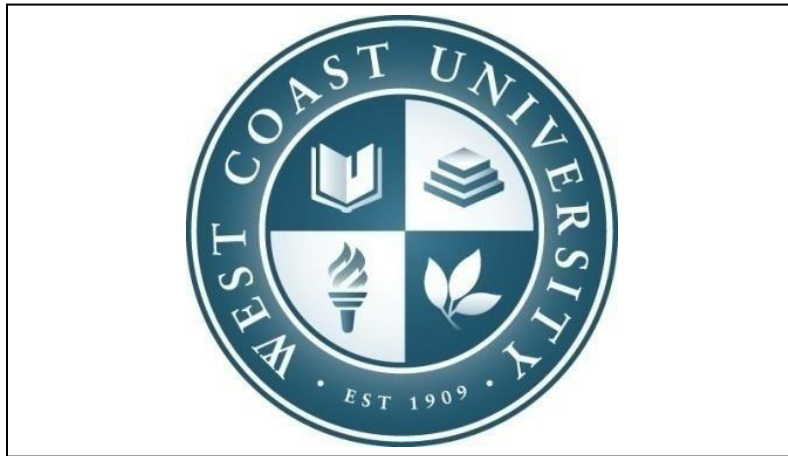
Visitor Signature: _____ Date: _____

Printed name: _____

WCU Personnel to Complete:

Access to facility (circle one): Approved Denied

West Coast University



Exam Site Information for Candidates Western Regional Examining Board (WREB) 2020 WREB Hygiene Examination

West Coast University

1477 South Manchester Ave., Anaheim, CA 92802

877-WCU-CLINIC or 877-928-2546

www.westcoastuniversity.edu

<http://westcoastuniversity.edu/about/dental-hygiene-clinic.html>

Exam Site Information for Candidates 2020
WREB Dental Hygiene

Table of Contents

1. School Facility and Services

- Clinic Address, Building Access and Hours
- Parking
- Security and Emergency Services
- ATM Machine
- Food Services Onsite

2. Preparing for the Exam

- Patient Screening
- Radiographs
- Administration of Local Anesthetic – Practitioner Availability
- Dental Operatory Units
- Equipment, Instruments and Expendable Materials
- Sterilization Services

3. During the Exam

- Infection Control (Surface Asepsis)
- Medical Emergencies and Equipment

4. Travel and Accommodation Information

- Airport Information
- Ground Transportation
- Hotel Accommodation

5. Appendices

- Campus Map
- Clinic Floor Plan
- Expendable Dental Materials Lists

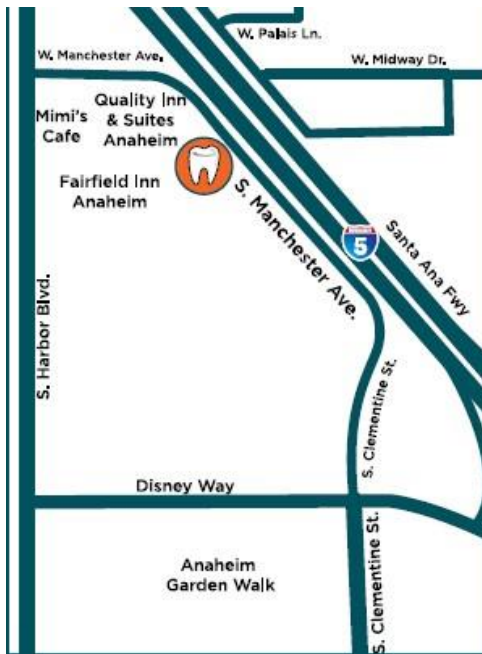
1. School Facility and Services

- **Location**

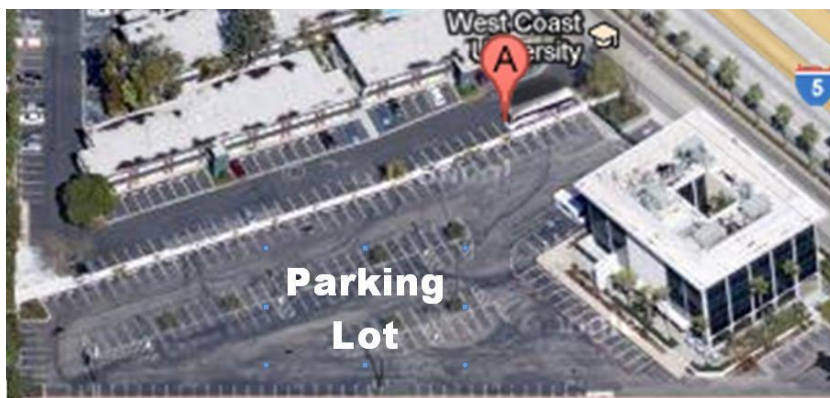
West Coast University is located at 1477 South Manchester Avenue in Anaheim, CA 92802. The campus is a half block from Disneyland and adjacent to Interstate 5 (I-5)
Contact: 714-782-1700

- **Building and Access Hours:**

The building will be open from 7:00am to 6:00pm unless otherwise requested by WREB.



- **Parking:** There is free student and patient parking available on site.



- **Security:**

Security will be provided on site by West Coast University and can be accessed at (949) 616-9803

- **ATM Machine:** ATM services not available on campus
- **Food Services Onsite:** Vending machines located in the ground floor atrium of the campus.

2. Preparing for the Hygiene Exam

Patient Screening: Patient screening will not be available at this facility for candidates prior to the WREB, due to liability and licensing laws.

The school does not provide patients for candidates to screen. NO SOLICITATION FOR PATIENTS IS PERMITTED IN THE SCHOOL BUILDING, THE IMMEDIATE CAMPUS AREA, OR AMONG OTHER CANDIDATES' PATIENTS.

Radiographs: It is recommended that the candidates have radiographs taken before arriving at WCU. Any radiographs deemed undiagnostic by WREB will be retaken onsite by radiology clinical staff.

Only conventional analog radiographs will be available.

- **Administration of Local Anesthetic:** Practitioner(s) from the school is **NOT AVAILABLE** to administer local anesthesia to Candidate Patients. There are no exceptions to this policy.
- **Equipment, Instruments and Expendable Dental Materials:** Refer to the respective WREB Candidate Guide for a list of materials and armamentarium that the Candidate must provide.
 - A. Handpiece and Prophy Angle Hookups:** The hook-up for handpieces is a standard 4-hole screw on connection. There are no handpieces or prophy angles for rent from the school. The air-pressure to each operatory unit and all handpieces is factory set at approximately 35 to 50 psi. Please ensure that your handpiece will operate effectively within these parameters.



- B. Sonic/Ultrasonic Devices:** WREB allows the use of sonic/ultrasonic devices as an adjunct to calculus removal. All chairs are equipped for hookup to ultrasonic devices. We have the quick disconnect for water and 110-volt electrical outlet with standard hook-up. There will be no handpieces for sale or for rent. No instrument or equipment rental is available at West Coast University.



Air/Water Syringe Tips: Disposable air/water syringe tips are provided under the school fee.

- a. **Blood Pressure Cuffs and Stethoscopes:** Candidates must provide their own blood pressure cuffs or stethoscopes.
- b. **Expendable Materials:** Expendable dental materials supplied by the school are noted in **Appendix A**. Add the expendable list to your document (items not listed are responsibility of Candidate).

Sterilization Services: Sterilization is not available prior to the examination. Following the examination, please allow 3 hours to sterilize all instruments. Sterilization bags are available and should be marked with your candidate number. Items to be processed should be dropped off at the receiving area on the 4th floor in appropriate instrument cassettes. A receipt will be given when turning in instruments. Please retain and use for pick-up of instruments. Processing takes approximately 3 hours.

3. During the Clinical Exam

Candidates are asked to furnish all dental instruments, handpieces, and supplies necessary to complete the exam. A “set-up” bag for each patient is available at the Clinical Supply Station and contains the following items: 2x2 gauze, cotton applicator, cotton rolls, 1 patient bib and holder, a disposable air/water tip, evacuator tip, saliva ejector and plastic chair and sleeve covers for hoses to air/water tip, evacuator and saliva ejector.

Candidates must furnish their own equipment (handpieces, hand instruments, and anesthetic syringes). If an item is not on the lists in this handout the candidate is responsible to bring it. The school will not assume any responsibility for any omissions in the candidate’s armamentarium.

Clinical Operatory Equipment:

All units are equipped with:

- Four-hole handpiece connectors for high-speed and low-speed handpieces. (NO handpieces are provided)
- Tri-function air/water syringe
- High-volume evacuation hose and saliva ejector hose
- A water/air quick connect for ultra-sonic scalers (the school does NOT provide ultrasonic scalers)
- Purified/filtered bottle water system

Equipment Rental:

No instrument or equipment rental is available at WCU.

Infection Control (Surface Asepsis): Infection control policies of WCU follow ADA and CDC guidelines. They include universal precautions. The school requires the use of all universal barriers (gloves, facemasks, eyewear, face-shields with the use of ultrasonic

scalars, and clinic gowns. YOU ARE RESPONSIBLE FOR PROVIDING OSHA ACCEPTABLE EYEWEAR FOR YOU AND YOUR PATIENTS.

You are responsible for providing your own clinic attire, which meet any standards imposed by WREB.

Wash your hands with an antimicrobial soap BEFORE and AFTER de-gloving. Remove all rings. Put gloves on when you are ready for intraoral procedures; after gloving, DO NOT touch anything other than the patient and equipment, instruments and supplies needed for the procedure. If you need to obtain some equipment outside the station, or if you need to touch the patient's chart, or handle any object other than those used in the procedure, or leave the station for any reason, you MUST remove your gloves followed by hand washing.

If your gloves are compromised (torn or damaged) during a procedure, remove them, wash your hands and put on a new pair of gloves.

Face masks, protective eyewear, and face shields (with ultrasonic use), gowns are required in all patient contacts. Gowns are to be worn only on the fourth floor. DO NOT WEAR GOWNS in labs, bathrooms, lounges, or off the fourth floor. Hair MUST be secured so that it does not contact your patient, instruments, equipment, or supplies.

All needles and anesthetic cartridges are disposed in the Sharps Waste Container each hand washing station.

ALWAYS use gloves, wear safety glasses and protective clothing when disinfecting the operatory station. A canister of surface disinfecting wipes is at each station and must be used before and after each patient. Use one wipe to clean the station and a 2nd wipe to disinfect the station. Wipe all surfaces including handle and switch of dental light. Chair covers, bracket tray covers, small barrier sleeves for the air water syringe and suction holders, cover gloves, protective stick barrier tape are provided.

At the completion of treatment all candidates are required to flush the HVAC and saliva ejector with Vacusol provided by WCU.

A. Hazardous Waste Disposal (exam-type specific):

Hygiene: All disposable materials will be placed into the appropriate trash receptacle at each hand wash station.

B. Sharps Disposal: All sharp materials, needles, cartridges, etc. must be deposited in the special containers labeled Sharps at each hand wash station.

C. Emergency Medical Equipment: If an emergency should arise the candidate should stay with the patient, assign a second responder to notify the Chief Examiner immediately. Have the 2nd responder tell him/her that you have a medical emergency.

EMERGENCY EQUIPMENT is located in the marked emergency cabinet at the end of each clinic. Oxygen and Automated External Defibrillators are located in each of the emergency cabinets in each clinic.

Everyone must vacate the building through the nearest stair well exit located at each end of the building. DO NOT USE THE ELEVATORS. Exit signs that are seen in the dark highlight the way to the stairwells. WCU personnel will assist in the evacuation of the building if necessary. Once outside of the building the people will assemble in the far end of the parking lot away from the building.

4. Travel and Accommodation Information

- **Airport Information:**

Los Angeles International Airport (LAX) www.lawa.org/welcomelax.aspx
1 World Way, Los Angeles, CA 90045 (310) 646-5252

Ground transportation: http://www.lawa.org/welcome_LAX.aspx?id=132

Rental cars: http://www.lawa.org/welcome_lax.aspx?id=1294

Long Beach Airport (LGB) www.lgb.org

Address: 4100 E. Donald Douglas Dr. Long Beach, CA 90808- 1798 (562) 570-2600

Ground Transportation/Rental cars: <http://www.lgb.org/travelers/transit.asp>

John Wayne Airport (SNA) www.ocair.com/

Address: 18601 Airport Way Santa Ana, CA (714) 252-5183

Ground Transportation/Rental cars: <http://www.ocair.com/groundtransportation/>

LA/Ontario International Airport (ONT) www.lawa.org/welcomeont.aspx

Address: 1923 East Avion Street Ontario, CA 91761 (909)937-2700

- **Ground Transportation:**

Ground Transportation/Rental cars:

http://www.lawa.org/welcome_ONT.aspx?id=118

- **Hotel Accommodations:** Reservations should be made directly with hotel. Accommodations are located close to the school and are listed below. Candidates should call for rates.

Hilton Anaheim

777 Convention Way

Anaheim, CA 92802

1.800.HILTONS

Distance to institution: 2.03 miles

www.hilton.com

Sheraton Park Hotel 1855

South Harbor Blvd.

Anaheim, CA 92802

1.800.325.3535

Distance to institution: 1.26 miles

www.starwoodhotels.com

Anaheim Marriott

700 West Convention Way

Anaheim, CA 92802

1.888.236.2427

Distance to institute: 1.31 miles

www.marriott.com

Hotel Menage

1221 South Harbor Blvd.

Anaheim, CA 92805

1.714.491.7333

Distance to institution: .54 miles www.hotelménage.com

Quality Inns & Suites

1441 S. Manchester Avenue

Anaheim, CA 92805

714.991.8100

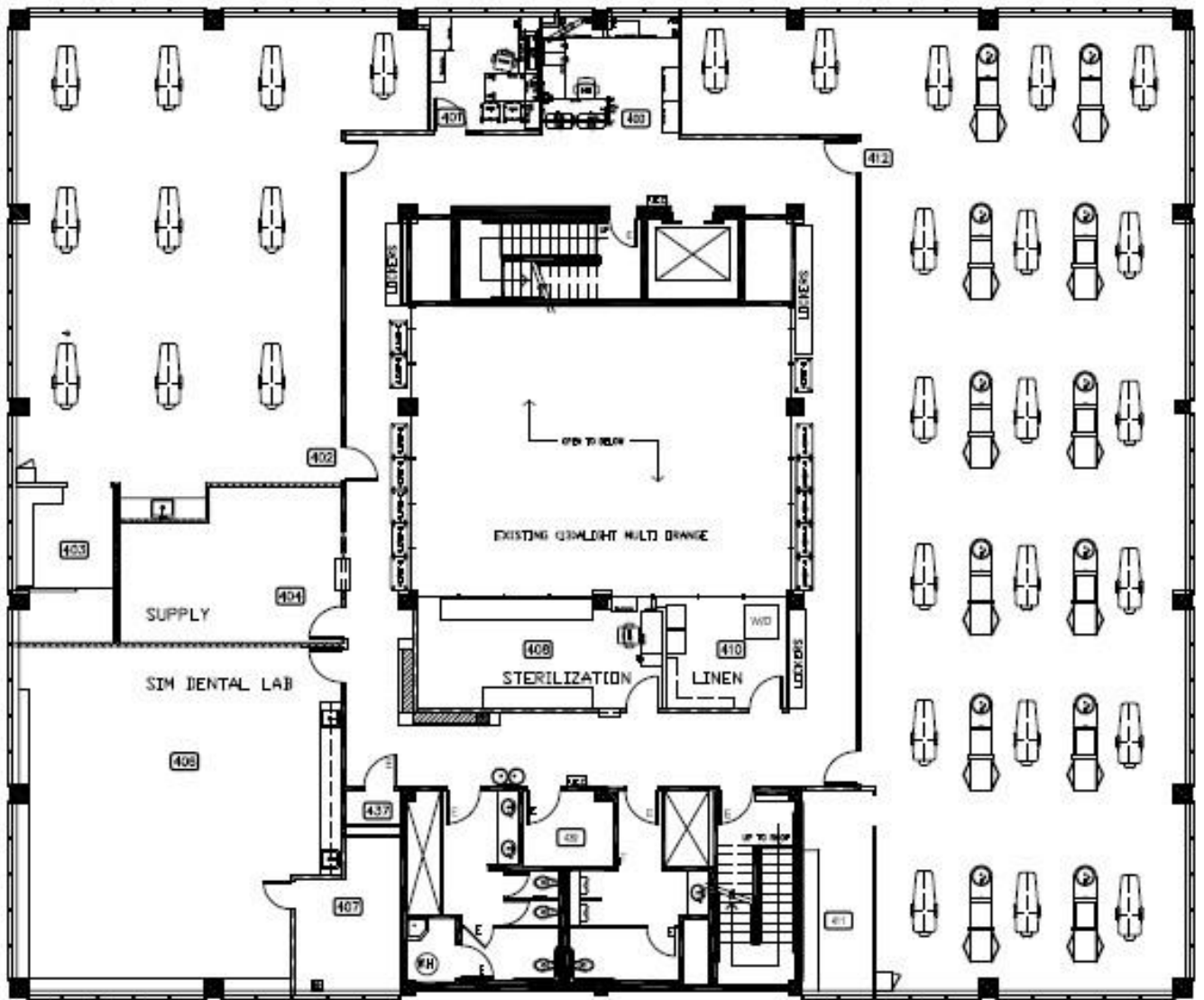
Next door to institution www.qualityinn.com/Anaheim

4. Maps

Campus Map: West Coast University is located at 1477 South Manchester Avenue in Anaheim, CA 92802. The campus is a half block from Disneyland and adjacent to Interstate 5 (I-5) so it is easy to locate.



Clinic Map



Expendable Dental Materials Appendices

APPENDIX A – Expendable Dental Hygiene Materials List Provided by Exam Site Host (West Coast Univ) To be provided in sufficient quantities for all Dental Hygiene Candidates		
2x2 gauze squares	Cotton-tip applicators	Patient bib clips, disposable
Air/water syringe tips	Drinking cups	Patient napkins/bibs
Antimicrobial mouthwash	Face masks	Prophy paste
Anesthetic(s)	Facial tissue	Sanitizing materials
• Local anesthetic(s) with and without vasoconstrictor	Gloves	Soap
• Topical anesthetic(s)	• Gloves, nonlatex (S, M, L, XL)	Standard saliva ejectors
• Syringe needles	• Overgloves	Surface disinfectant
Autoclave bags, small	Headrest covers	Tray covers
Autoclave bags, medium	Instrument trays, disposable	Trash bags
Barrier covers/tape	Paper towels	