

Eastern Washington University



**Exam Site Information for Candidates
Western Regional Examining Board (WREB)
2020 WREB Hygiene Examination**

**Eastern Washington University
Dental Hygiene Department/Clinic
Health Sciences Building
310 N. Riverpoint Blvd. Box #160
Spokane, WA 99202
509-828-1300**

Exam Site Information for Candidates
2019 WREB Dental Hygiene, Local Anesthesia & Restorative Examinations

Table of Contents

1. School Facility and Services

- Clinic Address:
- Building Access and Hours
- Parking
- Security and Emergency Services
- ATM Machine
- Food Services Onsite

2. Preparing for the Exam

- Patient Screening
- Radiographs
- Administration of Local Anesthetic – Practitioner Availability
- Dental Operatory Units
- Equipment, Instruments and Expendable Materials
- Sterilization Services

3. During the Exam

- Infection Control (Surface Asepsis)
- Medical Emergencies and Equipment

4. Travel and Accommodation Information

- Airport Information
- Ground Transportation
- Hotel Accommodation

5. Appendices

- Campus Map
- Clinic Floor Plan
- Expendable Dental Materials Lists

1. School Facility and Services

- **Clinic Location:**

Eastern Washington University Dental Hygiene Clinic
Health Sciences Bldg. #160
310 N. Riverpoint Blvd.
Spokane, WA 99202

EWU Telephone number: 509-828-1300

Contact name for questions: Jennifer Hinkle, Clinic Supervisor II
Direct phone line: 509-828-1292

- **Building Access and Hours:**

Access is South, West and East of the Health Science Building.
Building opens at 6:00 am on exam days.

- **Parking:**

Pay by plate parking is hourly in parking lot North (across the street, Green lot) and East (Orange lot) of the Clinic for Candidates. Free Patient parking is in the parking lot North of clinic.

- Your license plate number will be your permit.
- Get hourly and daily permits from the pay stations or the Whoosh app (whoosh.com)
- Use pay stations in parking lots or the [Whoosh](#) app on your smartphone.
- Pay stations only accept One-dollar bills (no coins) and accepts Visa, MasterCard, Discover.
- Parking fees: \$2.00 per hour or \$5.00 to \$7.00 a day.

- **Security and Emergency Services:**

Campus Security: 509-358-7995

Emergency Services: 9-1-1

The WSU Spokane Campus has a 24-hour safety and security office open every day of the year. All safety and security officers on campus are trained professionals, however the city of Spokane police and fire officials are the first responders in the event of an emergency.

- **ATM Machine:** Academic Center (Building 1 on map)

- **Food Services Onsite:**

Academic Center Fresh Plate Cafe

Mon – Thu: 7:30 a.m. to 8 p.m.

(6 p.m. in summer)

Fridays: 7:30 a.m. to 5 p.m.

Weekends: closed

Nursing Building Cafe

Weekdays: 7:30 a.m. to 3 p.m.

For catering, contact:

Barbara Pagarigan

freshplate@gmail.com

ph: 509-808-6195

2. Preparing for the Exam

Preparing for the Hygiene Exam

- **Patient Screening:**

Candidates must provide their own patient. EWU does not furnish any patients or make any records available for patient screening prior to the exam. Eastern Washington University does not provide clinical space for patient screening.

Note: A practitioner(s) from the school **is not** available to administer local anesthesia to candidates' patients. There are no exceptions to this policy.

- **Radiographs:**

Exposure of digital x-rays are \$10.00 for the first x-ray, \$5.00 for additional (up to a maximum of \$45.00 for a FMXR) 4 Bitewings are \$25.00, Pano is \$35.00. X-rays will be taken by the School Coordinator or assistant. We only accept Visa, MasterCard, and American Express. We do not accept cash.

- **Administration of Local Anesthetic:**

Note: Practitioner(s) from the school is **NOT AVAILABLE** to administer local anesthesia to Candidate Patients. There are no exceptions to this policy.

- **Dental Operatory Units**

Each EWU Dental Operatory unit/workspace has:

A-Dec Chairs: 1021

A-Dec Delivery Systems: 4631

Equipment, Instruments and Expendable Dental Materials: Refer to the respective WREB Candidate Guide for a list of materials and armamentarium that the Candidate must provide.

Handpiece and Propfy Angle Hookups:

Two varieties of handpiece hoses are available on each unit: a 4-hole standard ADEC high-speed handpiece hose and a 4-hole Midwest Quick-Connect hose (for slow speed) with built- in swivel. **EWU provides a high-speed handpiece and a slow speed handpiece with a latch head at each unit for the restorative exam.** If a handpiece is requested for the hygiene exam, one will be made available. Star Dentaleze makes both handpieces.

Sonic/Ultrasonic Devices:

Each unit is equipped with a 30 MHz ultrasonic Dentsply Cavitron unit and a Dentsply SteriMate handpiece. Candidates **must** provide their own 30 MHz ultrasonic inserts.

Air/Water Syringe Tips:

Metal A-Dec air/water syringe tips are provided, **one per unit.** Please return tips to be sterilized and reused by placing them on the **DIRTY** cart. If candidates need more than one syringe tip, they are available for purchase. Candidates may bring an A-dec air/water syringe tip with them or be prepared to purchase one at EWU for their exam. A-Dec recommends metal tips for safety reasons. This cost is \$6.25 including tax. Exact cash, checks, or credit cards are accepted.

Blood Pressure Cuffs and Stethoscopes:

Blood pressure cuffs are located at each unit. Candidates need to bring their own stethoscope.

Expendable Materials:

Expendable dental materials supplied by the school are noted in **Appendix A.**

- **Sterilization Services:**

LIMITED STERILIZATION is available. Candidates should arrive with all items needed previously sterilized. In cases where an item is dropped, or otherwise contaminated, a StatIM steam sterilizer is available. **Hours of sterilization are 7am to 5pm.**

Preparing for the *Local Anesthesia Exam*

- **Equipment, Instruments and Expendable Dental Materials:** Refer to the respective WREB Candidate Guide for a list of materials and armamentarium that the Candidate must provide.

Air/Water Syringe Tips:

Metal A-Dec air/water syringe tips are provided, **one per unit**. Please return tips to be sterilized and reused by placing them on the **DIRTY** cart. If candidates need more than one syringe tip, they are available for purchase. Candidates may bring an A-dec air/water syringe tip with them or be prepared to purchase one at EWU for their exam. A-Dec recommends metal tips for safety reasons. This cost is \$6.25 including tax. Exact cash, checks, or credit cards are accepted

Expendable Materials:

Expendable dental materials supplied by the school are noted in **Appendix B**.

- **Sterilization Services:**

LIMITED STERILIZATION is available. Candidates should arrive with all items needed previously sterilized. In cases where an item is dropped, or otherwise contaminated, a StatIM steam sterilizer is available. **Hours of sterilization are 7am to 5pm.**

Preparing for the *Restorative Exam*

- **Equipment, Instruments and Expendable Dental Materials:** Refer to the respective WREB Candidate Guide for a list of materials and armamentarium that the Candidate must provide.

Handpiece and Prophy Angle Hookups:

EWU clinics are equipped with ADEC chairs and workstations. Two varieties of handpiece hoses are available on each unit: a 4-hole standard ADEC high-speed handpiece hose and a 4-hole Midwest Quick-Connect hose (for slow speed) with built- in swivel. **EWU provides a Star 430SWL fiber optic high-speed handpiece and a Titan 3 slow speed motor, motor to angle adapter, and a latch head handpiece at each unit for the restorative exam.** Star Dentaleze makes both handpieces.

Air/Water Syringe Tips:

Metal A-Dec air/water syringe tips are provided, **one per unit**. Please return tips to be sterilized and reused by placing them on the **DIRTY** cart. If candidates need more than one syringe tip, they are available for purchase. Candidates may bring an A-dec air/water syringe tip with them or be prepared to purchase one at EWU for their exam. A-Dec recommends metal tips for safety reasons. This cost is \$6.25 including tax. Only credit cards are accepted

Curing Lights:

Valo curing lights and shields are available at each unit during the Restorative Exam.

Expendable Materials:

Expendable dental materials supplied by the school are noted in **Appendix C**.

- **Sterilization Services:**

LIMITED STERILIZATION is available. Candidates should arrive with all items needed previously sterilized. In cases where an item is dropped, or otherwise contaminated, a StatIM steam sterilizer is available. **Hours of sterilization are 7am to 5pm.**

3. During the Clinical Exam

- **Dental Operatory Units:**

Each EWU Dental Operatory unit/workstation has:

A-Dec Chairs: 1021

A-Dec Delivery Systems: 4631

- **Infection Control (Surface Asepsis):** Disinfectant wipes are located at each unit for countertops, and all hard surfaces. Only use soap and water on the dental chair. Surface barriers are provided for light handles, chair handles, hoses, counter tops, and head rest.

Clinical treatment area --instructions on setting up units:

- Remember to wear appropriate Personal Protective Equipment (PPE) including gloves, safety eyewear, and masks for all cleanup activities
- After cleaning and disinfecting the surfaces, wash hands with soap.
- Gather all the barrier needed and begin setting up treatment area. Candidates may choose to wear exam gloves for this; however, clean hands contacting previously cleaned and disinfected items are acceptable.
- Place a **headrest cover** over the chair headrest.
- Place plastic bags over both hose hanger bars. It is important to place the plastic correctly, so the hangers are totally protected from contact with the hoses and handpieces.
- Place a plastic bag over the counter cabinet door for bloody gauze and other contaminated items during the exam.
- Place narrow plastic sacks over the **evacuation handpiece(s)** and **air/water syringe handpiece**. Place a disposable saliva ejector tip in holder if it is expected to be used during the exam. Later when opening sterile instrument packs, place the HVE tip with screen and air water tip in appropriate places.

- Cover **light switch, light handles, and chair handles** with appropriate barriers.
- Cover the **instrument tray** with a plastic bag, place tray cover on top, add a few 2 x 2 gauze squares, disposable dappen dishes (for lip balm or topical), cotton applicator sticks, etc. and other items as needed.

Clinical treatment area procedure – end of exam:

- Remember to wear appropriate Personal Protective Equipment (PPE) including gloves, safety eyewear, and masks for all cleanup activities.
- Remove **contaminated surface covers** without contaminating the previously disinfected surfaces.
- Remove the other covers, exam gloves, bibs, and other disposables. It should then be disposed of in the large covered garbage containers. The uncovered garbage containers under sinks are for paper towel disposal only.
- Contaminated needles and used anesthetic cartridges are regulated waste and are placed in the Sharps Containers and the black RCRA containers provided. Red sharps and black RCRA containers are conveniently located on countertops throughout the examination area. DO NOT place LA protector cards in the sharp's container; these can go into the trash.
- Disinfectant wipes are provided at each operatory. Wipe/ wipe all surfaces touched except chairs. Chairs are cleaned with soap and water only.

Exposures and Exposure Personnel (wear your PPE and handle sharps carefully)

See Clinic/Site Supervisor or clinical assistants in clinic during the exam for paperwork.

SDS Manuals/Books: Located on computer in clinic; see Site Supervisor for access.

Hazardous Waste Disposal:

Hygiene: Blood-soaked/caked material from which fluid may be squeezed and fluids in quantities over 20 cc's (20 cc's equal slightly less than 1/8 cup) are disposed of in red plastic biohazard bags.

Local Anesthesia: Blood-soaked/caked material from which fluid may be squeezed and fluids in quantities over 20 cc's (20 cc's equal slightly less than 1/8 cup) are disposed of in red plastic biohazard bags.

Contaminated needles and used anesthetic cartridges are regulated waste and are placed in the Sharps Containers and the black RCRA containers provided. Red sharps and black RCRA containers are conveniently located on countertops throughout the examination area. DO NOT place LA protector cards in the sharp's container; these can go into the trash.

Restorative: Amalgam scraps are disposed of in containers labeled “Non-contact Amalgam” and located on Islands 1 and 2 in the candidate clinic.

- **Medical Emergency and Equipment:**

Portable oxygen tank is located at the south end (away from windows) of island 2 in the clinic. Oxygen set up contains bag, valve, mask, nasal cannula and pocket mask. (Locations marked with **O2** on floor plan.)

Phone is located on the west wall adjacent to operatory #20. (Location marked with **Phone** on floor plan.)

To reach 9-1-1, simply dial 911. No prefix is required; however, it does take a few seconds for it to ring through so just hold on. To reach campus security dial 5-358-7995, or #40 from any campus phone.

Fire Extinguishers: 3 total fire extinguishers--one located across from chairs 3 and 33, as well as next to the conference room.

How to use: pull the pin, aim at the base of the fire, and squeeze the trigger. **Do not use if faced with a large or rapidly growing fire, just exit as soon as possible (always escort patient to safety)**

Fire Blankets are located at islands 1 and 3 in the cupboards with the emergency drug kits.

Nearest Exits: Main side doors to the clinic, near chair 3. From the building, straight out to the east of the building (left of the elevators). **Meet in the center of the cement walkway to other building**

Eyewash Stations (please ensure that both candidates and patients wear protective eyewear): Eyewash stations are located at islands 1, 2, and 3, room 179 (darkroom) and room 176 (sterilization room)

Emergency Oxygen: 3--Victor Oxygen Therapy Regulators attached to oxygen tanks in portable carts (next to chair 9 at island 2). The tank has an adult oxygen mask attached to it. Other supplies are available in the emergency cupboards at island s.

First Aid and Emergency Kits: Emergency drug kits are located at island 2 in the cupboard above and to the left of the sink and is clearly marked. Chemical ice packs and Perio-retrievers are also available at Island 2. (Locations marked with **Rx** on floor plan.) BP cuffs are mounted on wall by each treatment area; a stethoscope and large cuff is available with each emergency drug kit.

AED: Located on the wall between the two restrooms across from chair #3.

4. Travel and Accommodation Information

- **Airport Information:** Spokane International Airport (GEG) serves the greater Spokane area.
- **Ground Transportation:** Taxi, Uber, and Lyft are available.
- **Public Transportation** via Spokane Transit Authority: spokanetransit.com
- **Hotel Accommodations:**

Please NOTE: If arriving at the clinic from a hotel shuttle or other transportation services please be sure to tell the driver that your exam is at EWU's Spokane campus, not in Cheney.

Hotels with Shuttles

Red Lion River Inn: 700 N Division St Spokane, WA 99202. Phone: 1-800-733-5466

The Holiday Inn at Spokane International Airport 1616 S Windsor Dr. Spokane, WA 99224 Phone: 509-838-1170.

Hotels directly across the street from the clinic site:

Courtyard by Marriott

401 N. Riverpoint Blvd., Spokane, WA 99202
Phone: 509-456-7600

Fairfield Inn Marriott

311 N. Riverpoint Blvd. Spokane, WA 99202
Phone: 509-747-913

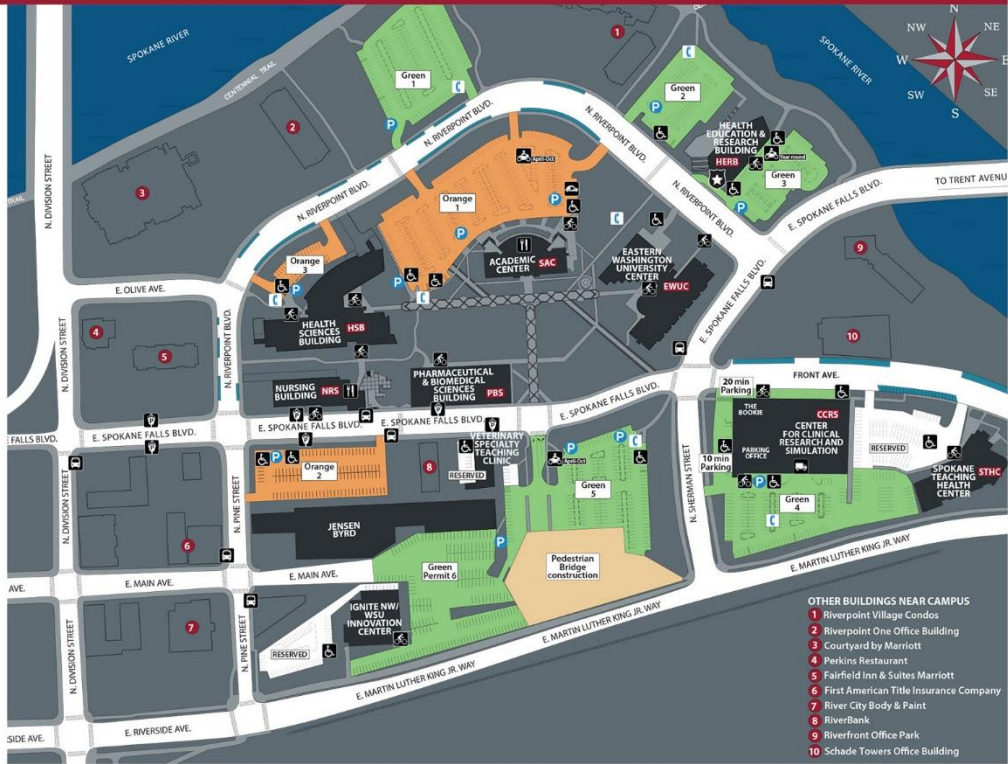
Campus Map



PHONE NUMBERS
 Campus Safety 509-358-7995
 Parking 509-368-6999
 WSU Spokane 509-358-7500
 EWU Spokane 509-828-1394

- Campus Safety
- Accessible parking
- Bus stop
- Electric car charging station
- Metered parking (2-hour parking)
- Pay Station
- Bike racks
- Motorcycle parking
- Mailing/Shipping/Receiving
- Café
- Campus Safety phones
- Crosswalks
- Patient parking only
- Free parking (1 hr limit)
- Other buildings around campus
- Trails and walking paths
- Other buildings (see menu on right)

27 July 2017



- OTHER BUILDINGS NEAR CAMPUS**
- 1 Riverpoint Village Condos
 - 2 Riverpoint One Office Building
 - 3 Courtyard by Marriott
 - 4 Perkins Restaurant
 - 5 Fairfield Inn & Suites Marriott
 - 6 First American Title Insurance Company
 - 7 River City Body & Paint
 - 8 RiverBank
 - 9 Riverfront Office Park
 - 10 Schade Towers Office Building

Our Buildings and what's inside

Unless otherwise designated, all are WSU.

Academic Center - SAC
 600 N. Riverpoint Blvd.
 ASWSUS - Associated Students WSU Spokane
 Café
 Chancellor & Vice Chancellors
 Communication & Development
 Ed Tech Innovation Center
 Finance & Budget Office
 Human Resources
 Library - WSU/EWU
 Medicine Administration/Student Services
 Medicine Dean's Office
 Office of Research
 Student Affairs
 Student Academic Support & Counseling
 Student Computer Lab - WSU/EWU
 Technology Support Center

Eastern Washington University Center - EWUC (SEWU)
 668 N. Riverpoint Blvd.
 Area Health Education Center - EWU
 Accounting - EWU
 Addiction Studies - EWU
 Business Administration - EWU
 Business & Public Administration, Dean's Office - EWU
 Creative Writing - EWU
 Finance & Marketing - EWU
 Get Lit! Programs - EWU
 Health Science & Public Health, Dean's Office - EWU
 Health Service Administration - EWU
 Information Systems & Business Analytics - EWU
 Information Technology Services - WSU
 Management - EWU
 Public Administration - EWU
 Public Health - EWU
 Urban and Regional Planning - EWU
 Social Work - EWU
 Student Computer Lab - EWU
 Student Services - EWU
 The Writers' Center - EWU

Health Education & Research Building - HERB (SHER)
 665 N. Riverpoint Blvd.
 Campus Safety
 Health Policy & Administration
 IREACH - Initiative for Research and Education
 to Advance Community Health
 Nutrition & Exercise Physiology
 NEP Health & Fitness Clinic

Health Sciences Building - HSB
 310 N. Riverpoint Blvd.
 Communication Disorders - EWU
 Dental Hygiene Clinic - EWU

Health Sciences Building - HSB Cont.
 Pharmacotherapy
 Physical Therapy - EWU
 Regional Initiatives in Dental Education, RIDE - EWU/UW
 Research Labs
 Speech & Hearing Sciences Administration

Ignite NW/WSU Innovation Center
 120 N. Pine St.
 Applied Sciences Laboratory
 Other Tenants
 University Center for Innovation

Jensen-Byrd Building
 131 E. Main Ave.
 Maintenance Shops

Nursing Building - NRS
 103 E. Spokane Falls Blvd.
 Café
 Clinical Performance & Simulation Labs
 Information Technology Services
 Nursing Administration/Student Services
 Nursing Dean's Office
 Nursing Research

Pharmaceutical & Biomedical Sciences Building - PBS
 205 E. Spokane Falls Blvd.
 Anatomy Lab
 Medicine Research
 Pharmacy Administration/Student Services
 Pharmacy Dean's Office
 Pharmacy Clinical Practice Labs
 Pharmacy Research
 Walgreens Auditorium

Center for Clinical Research and Simulation - CCRS
 (Previously South Campus Facility)
 412 E. Spokane Falls Blvd.
 The Bookie Bookstore
 Clinical Research
 Education - WSU
 Environmental Health & Safety
 Facilities Operations
 Facilities Services, Capital Planning
 Mailing/Shipping/Receiving Services
 MESA - Mathematics, Engineering, Science Achievement
 Parking Office
 Sleep & Performance Research Center

Spokane Teaching Health Clinic - STHC
 624 E. Front Ave.

Veterinary Specialty Teaching Clinic
 218 E. Spokane Falls Blvd.

VISITOR PARKING

Payment for parking is required in all lots 24 hours a day, every day of the year.

- Pay-and-Display Kiosks**
- Orange and Green parking lots have Pay-and-Display kiosks.
 - Cost is \$1 minimum per hour or \$4 all day in a Green lot and \$6 all day in the Orange lot.
 - Pay by phone with whoosh.
 - Permit must be visible on windshield.
 - Orange 1 is most convenient for visitors.

- Metered Parking**
- Spokane Falls Blvd. and Riverpoint Blvd.
 - A limited number in all Green lots.
 - Meters also are at the Health Sciences Building for clinic patients, 310 N. Riverpoint Blvd.

- Motorcycle Parking with valid permit**
- Motorcycle parking in Orange 1 and Green 5 available from April - Oct
 - Green 3 and southwest corner of Green 5 open year round
 - Or park individually in any parking space

Parking Services
 Center for Clinical Research and Simulation, Room 314
spokane.wsu.edu/parking | 509-368-6999







FOR MORE INFORMATION

TOBACCO-FREE CAMPUS
 WSU Health Sciences Spokane
spokane.wsu.edu | 509-358-7500
 Eastern Washington University Spokane
ewu.edu | 509-359-6200

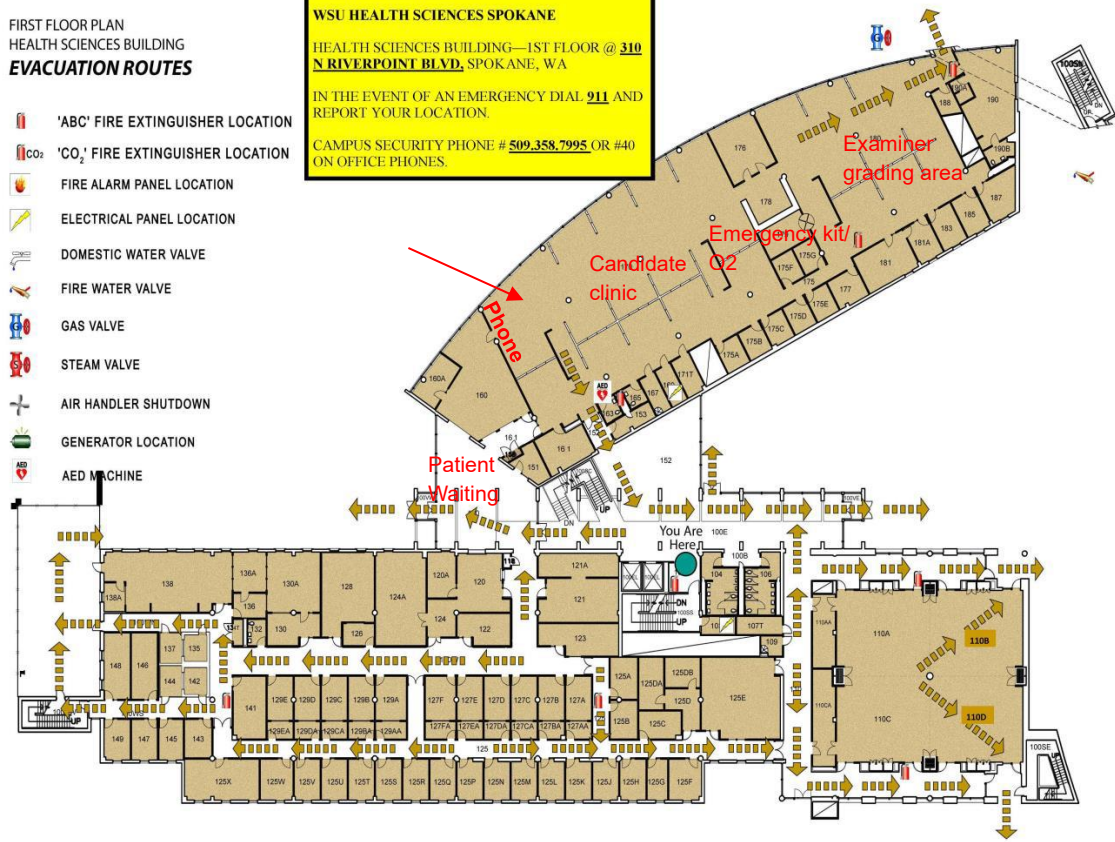
MAILING AND SHIPPING

PLEASE DO NOT USE BUILDING ADDRESSES FOR

FIRST FLOOR PLAN
HEALTH SCIENCES BUILDING
EVACUATION ROUTES

-  'ABC' FIRE EXTINGUISHER LOCATION
-  'CO2' FIRE EXTINGUISHER LOCATION
-  FIRE ALARM PANEL LOCATION
-  ELECTRICAL PANEL LOCATION
-  DOMESTIC WATER VALVE
-  FIRE WATER VALVE
-  GAS VALVE
-  STEAM VALVE
-  AIR HANDLER SHUTDOWN
-  GENERATOR LOCATION
-  AED MACHINE

BUILDING ADDRESS:
WSU HEALTH SCIENCES SPOKANE
HEALTH SCIENCES BUILDING—1ST FLOOR @ **310**
N RIVERPOINT BLVD, SPOKANE, WA
IN THE EVENT OF AN EMERGENCY DIAL **911** AND
REPORT YOUR LOCATION.
CAMPUS SECURITY PHONE # **509.358.7995** OR #40
ON OFFICE PHONES.



Expendable Dental Materials Appendices

APPENDIX A – Expendable Dental Hygiene Materials List Provided by Exam Site Host (EWU) To be provided in sufficient quantities for all Dental Hygiene Candidates		
2x2 gauze squares	Cotton-tip applicators	Patient bib clips, disposable
Air/water syringe tips	Drinking cups	Patient napkins/bibs
Antimicrobial mouthwash	Face masks	Sanitizing materials
Anesthetic(s)	Facial tissue	Soap
• Local anesthetic(s)	Gloves	Standard saliva ejectors
• Topical anesthetic(s)	• Gloves, nonlatex (S, M, L, XL)	Surface disinfectant
Autoclave bags, small	Headrest covers	Tray covers
Autoclave bags, medium	Instrument trays, disposable	Trash bags
Autoclave tape	Needles: 25 ga. short/long, 27 ga. short/ long	Prophy paste
Barrier covers	Paper towels	

APPENDIX B – Expendable Local Anesthesia Materials List Provided by Exam Site Host (EWU) To be provided in sufficient quantities for all Local Anesthesia Candidates		
2x2 gauze squares	Cotton-tip applicators	Patient bib clips, disposable
Air/water syringe tips	Drinking cups	Patient napkins/bibs
Antimicrobial mouthwash	Face masks	Sanitizing materials
Anesthetic(s)	Facial tissue	Soap
• Local anesthetic(s)	Gloves	Standard saliva ejectors
• Topical anesthetic(s)	• Gloves, nonlatex (S, M, L, XL)	Surface disinfectant
Autoclave bags, small	Needles: 25 ga. short/long, 27 ga. short/ long	Tray covers
Autoclave bags, medium	Headrest covers	Trash bags
Autoclave tape	Instrument trays, disposable	
Barrier covers	Paper towels	

APPENDIX C – Expendable Restorative Materials List Provided by Exam Site Host (EWU) To be provided in sufficient quantities for all Restorative Candidates		
2x2 gauze squares	Face masks	Rod posts (mounting Typodont)
Air syringe tips	Gloves	Soap
Amalgamator/Tricherator	• Gloves, nonlatex (S, M, L, XL)	Surface disinfectant
Amalgam scrap container(s)	Instrument trays, disposable	Tray covers
Barrier covers	Paper towels	Trash bags
Cotton-tip applicators	Sanitizing materials	