



**CABRILLO COLLEGE
DENTAL HYGIENE PROGRAM**



**Dental Hygiene WREB Candidate
Handbook
2020**

(includes Covid-19 update)

**Cabrillo College Dental Hygiene Program
6500 Soquel Drive,
Health & Wellness Building- HW2000
Aptos, CA 95003**

CABRILLO COLLEGE

SITE INFORMATION FOR WREB EXAMINATIONS

Contact Information:

School Coordinator: Elicia Hammond, R.D.H

Cell phone:831-234-7965

elhammon@cabrillo.edu

Please do not call the college, clinic or other personnel for information. It is best to use the above email address. Most responses will be within 24 hours or less.

Site Location:

Cabrillo College Dental Hygiene Clinic

HW2114

6500 Soquel Drive

Aptos, CA 95003

8/20/20 COVID-19 UPDATE

Remember this pandemic is a constantly changing situation. We follow recommendations from Santa Cruz County and the California Department of Public Health. These guidelines are subject to change.

Covid-19 Clinic Equipment Additions:

Our clinic is equipped with Jade Hepa/UV Air Purification Systems, plexiglass between each operatory and ADS Extraoral Suction Systems each operatory.

Ultrasonic Scalers:

Ultrasonic scalers **will** be allowed.

Aerosol Reduction Devices:

An aerosol reduction device such as Mr. Thirsty or Isolite is required at **all times**. Both of these devices will be provided. Please familiarize yourself with their use. Both devices will be available for demonstration at orientation.

Mr. Thirsty video-

<https://www.youtube.com/watch?v=wvesJrm7-xs>

Isolite website-

<https://www.zyris.com/products/isolite-3/>

Required PPE:

N95 or KN95 respirator, available to purchase at the clinic for \$5.

Level 3 masks are not acceptable.

Face shield, head covering, shoe covers, disposable or washable lab coat, protective eyewear with side protection and non-latex gloves are also required.

Screening, Face Coverings, Social Distancing Rules:

Every person that enters the building must wear a face covering and be screened for COVID-19: Temperature, pulse and oxygen levels will be taken at the front door to the clinic. Please have the COVID-19 screening questionnaire ready for both the candidate and patient before being screened. **If temp is 100 or over, or O2 is 96 or below, entrance will not be permitted. Anyone with COVID-19, exposure or symptoms will not be allowed to participate in the exam.**

Social distancing must be adhered to at all times, indoors and outdoors.

Face coverings must be worn at all times on campus.

Please do not bring extra people who are not part of the exam. They will not be allowed in the building.

Back up patients will need to wait outside or in the car. The clinic waiting room will not be available.

END OF COVID-19 UPDATE

Candidate Information:

Patient Screening:

The facility will not be available to screen patients to see if they qualify for the exam.

Handpiece and Prophy Angle Hook-Ups:

The facility is equipped with ADEC chairs & delivery units with standard connections. For slow speed handpieces, there is a 4-hole pattern connection. No equipment is available for rental.

Disposable Air/Water syringe tips:

Cabrillo uses disposable air/water syringe tips, which will be provided.

Sonic/Ultrasonic Devices:

All operatories are equipped with water and power connections for ultrasonic scaling devices with a universal water connection. A Satelec piezo ultrasonic connection is also available. No equipment is available for rental. **Candidates are expected to provide their own instruments and ultrasonic scaling devices.**

X-Rays:

Candidates are to come prepared with radiographs for their patients. Digital radiographs and all copies should be printed prior to the exam. Dexis digital sensors will be available to the candidates to expose X-rays and print at the exam site, during exam hours. Panoramic radiographs will not be available. Duplication services of traditional radiographs will not be available. Payment is cash only, please have correct change.

Cost of radiographs:

\$80.00 Full Mouth Series

\$20.00 Each Periapical

Sterilization:

Candidates should arrive with all instruments sterilized. Sterilization will be available only if instruments are needed for a retake, or if the local anesthesia exam is offered.

Cabrillo College assumes no responsibility for instruments or personal effects that are lost, broken, stolen, damaged, or not retrieved within 2 days after the closing of the examination.

Infection Control-Standard Precautions:

Standard Precautions and Standard Personal Protective Equipment (PPE) are required. This includes the use of a lab coat, non-latex gloves, N95 or KN95 respirator, a face shield, head covering, shoe covers and protective eyewear with side protection. Cabrillo College Dental Hygiene does not provide protective eyewear, face shields, lab coats or gowns for the candidates or patients. Sharps containers are located in every operatory and must be used for all sharp's disposal. Red biohazard bags will be available for hazardous waste disposal. PD

Wipes are used for disinfecting the operatory. Plastic barriers are used on all surfaces that may become contaminated.

During the tour, the school coordinator will give a demonstration regarding set up and break down of operatories.

Candidates are to provide their own barriers for their personal ultrasonic scaling device and handle.

Emergency Equipment:

There are 2 portable oxygen tanks, an AED and a Medical Emergency Kit in the clinic. Refer to the location of these devices on clinic map. The location of these devices will also be included in the tour. An Emergency Procedure Binder and a land line to dial 911 are located at the main instructor station in the clinic.

Parking:

Parking Lot P is the lot closest to the clinic.

Daily use parking fees are required in all campus parking lots. One day parking permits (\$4.00) are available at permit machines located in parking lots and may be purchased using credit/debit cards only. Parking rules are strictly enforced on campus.

COVID UPDATE: No parking fees at this time, you do not need to have a permit

Security:

Security needs are met by the County of Santa Cruz Sheriff's Department. 24-hour non-emergency telephone number is 831-688-1117. Call 911 for an emergency.

Supplies that will be provided:

surface disinfectant	paper towels
hand soap	disposable tray covers
air/ H ₂ O syringe tips	trash bags
standard saliva ejectors	patient bibs/bib holder
autoclave tape & bags	drinking cups
2x2 gauze squares	standard HVE tips
Mr. Thirsty or Isolite aerosol reduction devices	chair covers
Schwartz Perio Retriever	cotton tip applicators
Sleeve barriers for: slow speed handpiece, saliva ejector, HVE, & air/H ₂ O syringes	antimicrobial mouthwash
facial tissue	prophy paste
	barrier tape

non-latex gloves
instrument trays
red biohazard bags

masks
anesthetic/needles
Peroxyl mouthwash

Operatories:

There is a total of 18 operatories in the clinic. 12 operatories will be used by the candidates, 6 will be used by the examiners. All of the operatories are ambidextrous and can be set-up for both right and left handed operators.

Tentative Room Assignments (subject to change—refer to WREB schedule):

All rooms are located in the Allied Health Building 2000
Candidate Orientation-Room HW2214, upstairs
Clinical Examination-Room HW2114 main clinic

Local Anesthesia:

A practitioner from the school is not available to administer local anesthesia to candidates' patients. Cabrillo College Dental Hygiene will not make arrangements for the candidates. If you would like a referral to a local qualified practitioner, please contact the school coordinator.

Food and Beverages:

Depending on the dates of the exam, Cabrillo College may not have food, beverage, or cafeteria services for candidates or their patients. Candidates should inform their patients to eat before coming to the exam or candidates may choose to bring food for their patients. On site refrigeration will not be available. There are vending machines on campus. Food and drink are not allowed in any areas near the candidate clinics or check-in desk during the examination.

COVID UPDATE: The vending machines are not in service, please bring water and food if needed

Language Translation:

Translation services for candidates and patients are not provided by Cabrillo College Dental Hygiene. Candidates who wish to bring a translator (for languages other than English) must provide all accommodations required. All translators must check in with the WREB Site Coordinator and School Coordinator upon arrival and will only be allowed into the clinical area when their services are required. Candidate translators must abide by all applicable candidate rules and safety requirements.

General Campus Information:

Cabrillo College is a smoke free campus. "Smoking" is defined as the use of products which produce smoke or vapor emissions, including electronic cigarettes. Animals are not allowed on campus or in the dental hygiene facility with the exception of registered service animals. Appropriate documentation will be required. There isn't an ATM machine. There is a bank 1.2 miles from campus.

Travel and Lodging Information:

Airport

The closest airport is San Jose International Airport. It is a 45 -60 minute drive to campus. Traffic is highly unpredictable so plan accordingly.

Uber and Lyft are readily available from the airport and throughout Santa Cruz County.

Lodging

Best Western Seacliff Inn
7500 Old Dominion Ct.
Aptos, CA 95003
831-207-4683 or 800-367-2003
www.seacliffinn.com

This is the closest hotel to Cabrillo College. Walking distance to the beach.

Seascape Beach Resort
1 Seascape Resort Dr.
Aptos, CA 95003
800-929-7727
www.seascaperesort.com

This is a high-end resort next to the ocean. Condominiums for multiple people are available.

Quality Inn
720 Hill St.
Capitola, CA 95010
831-462-3004
www.qualityinncapitola.com

Best Western Plus
Capitola By-the Sea Inn & Suites
1435 41st Ave.

Capitola, CA 95010

831-477-0607

<http://www.bestwesterncapitola.com/>

Restaurants:

Many restaurants are located within 1 mile of campus. The Farm Restaurant is located across the street from the clinic.

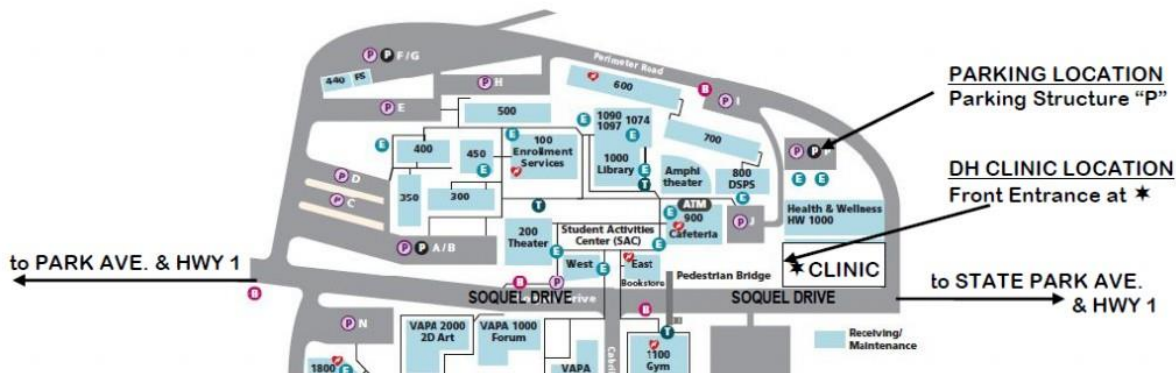
Weather:

The weather in the area is usually mild, with the mornings and evenings typically chilly or foggy. It is suggested to dress in layers as weather conditions can change rapidly.

Directions and Campus Map to Dental Hygiene Clinic:

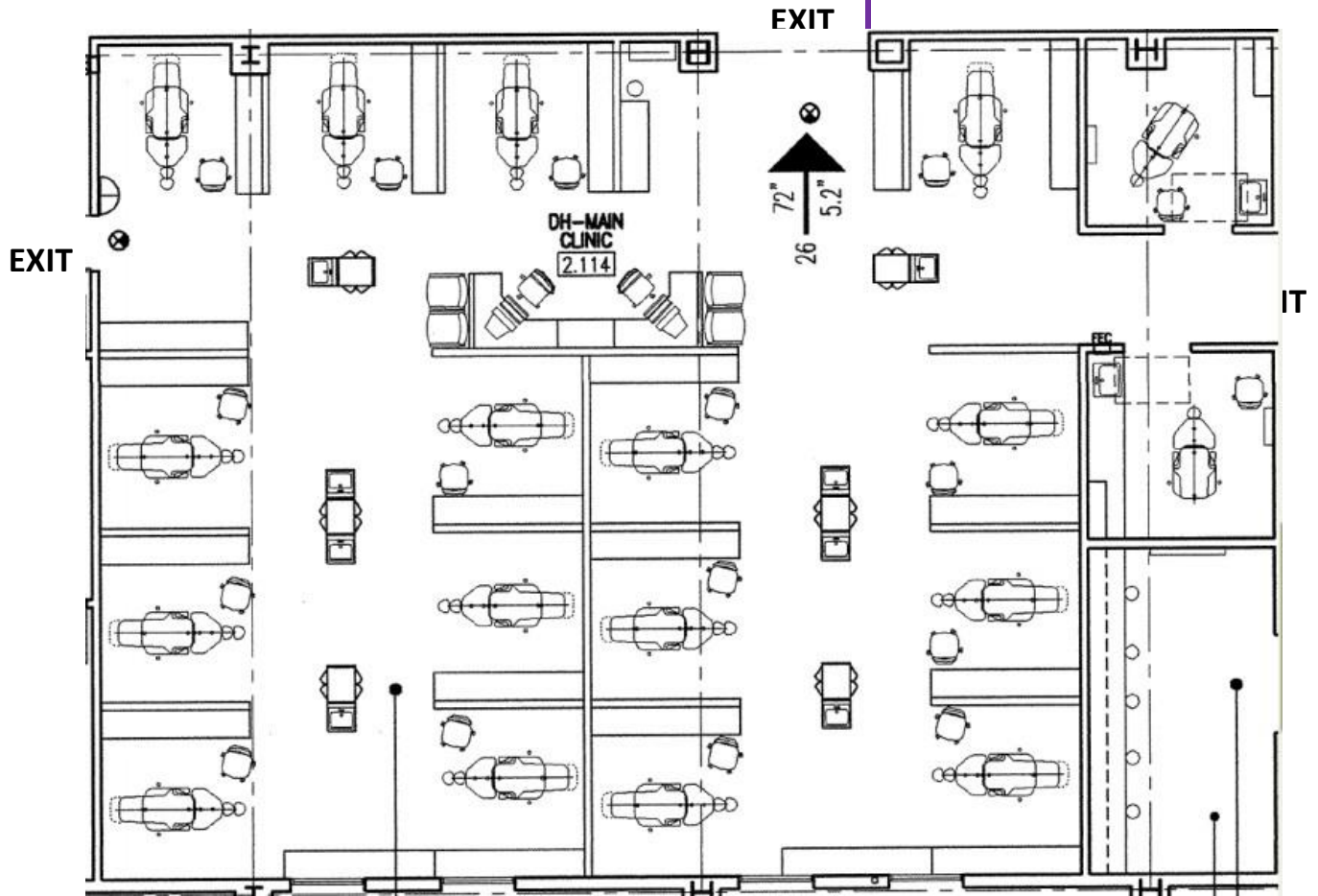
From MONTEREY: Take Hwy 1 north exiting at **STATE PARK DR.** (exit 435). Turn right. At the signal turn left onto **SOQUEL DR.** Travel through one signal past the fire station. Continue for 2 blocks, then turn right into the Cabrillo College entrance across from “The Farm” restaurant. Proceed up the hill to Parking Structure “P” on the left.

From SANTA CRUZ: Take Hwy 1 south exiting at **PARK AVE.** (exit 436). Turn left at signal. At the third signal turn right onto **SOQUEL DR.** Travel through two signals, past the main campus, then turn left at your next opportunity into the Cabrillo College entrance across from “The Farm” restaurant. Proceed up the hill to Parking Structure “P” on the left.



Candidate Examination/Treatment Area

EXAMINER AREA ONLY



AED, Medical Emergency Kit & O₂ Tank