

Salt Lake Community College



Exam Site Information for Candidates
Western Regional Examining Board (WREB)
2019 WREB Hygiene Examination

SALT LAKE COMMUNITY COLLEGE
JORDAN CAMPUS
3491 W. WIGHTS FORT ROAD
HIGH TECH LEARNING CENTER, ROOM 133
(801) 957-6001

Exam Site Information for Candidates
2019 WREB Dental Hygiene, Local Anesthesia & Clinical Examinations

Table of Contents

1. School Facility and Services

- Clinic Address, Building Access and Hours
- Parking
- Security and Emergency Services
- ATM Machine
- Food Services Onsite

2. Preparing for the Exam

- Patient Screening
- Radiographs
- Administration of Local Anesthetic – Practitioner Availability
- Dental Operatory Units
- Equipment, Instruments and Expendable Materials
- Sterilization Services

3. During the Exam

- Infection Control (Surface Asepsis)
- Medical Emergencies and Equipment

4. Travel and Accommodation Information

- Airport Information
- Ground Transportation
- Hotel Accommodation

5. Appendices

- Campus Map
- Clinic Floor Plan
- Expendable Dental Materials Lists


1. School Facility and Services

- **Location, Building Access and Hours:** Salt Lake Community College, Jordan Campus is located at 3491 West Wights Fort Road, West Jordan, Utah 84088. The Dental Hygiene Clinic is housed in the High Tech Learning Center Building, Room 133. The HTC building and dental hygiene clinic will be open from 6:00 a.m. to 6:00 p.m. during the WREB Clinical and Local Anesthesia Examinations.
- **Parking:** Parking at the SLCC Jordan Campus is monitored by campus parking services. However, ticketing and parking pass requirements will be suspended during the WREB examinations for **designated parking lot J-2 ONLY** (see map link below).

Candidates and patients may park in the following areas within lot J-2:

Spaces marked Dental Hygiene Patients Only (designated by blue signs)

Student spaces (designated by yellow painted lines).

* State Issued Handicap Permits are Required for ALL Handicap Spaces

***Do NOT park in "Metered" parking spaces**

***Do NOT park in faculty BLUE lines spaces**

SLCC is NOT responsible for personal items left unattended in vehicles in the parking lot.

Map: <http://www.slcc.edu/parking/docs/maps/jordan-parking-map.pdf>

- **Security and Emergency Services:** Emergency exits, portable oxygen, fire extinguisher and AED unit are indicated on the clinic map. Equipment will be identified, and protocol discussed during clinic tour.

Reference for medical needs are as follows:

Emergency Ambulance, Fire and Police:	911
Jordan Valley Medical Center- Emergency:	(801) 562-4244
Campus Security-Utah Highway Patrol:	(801) 957-3800
<i>(When using campus telephones dial 3800 for UT Highway Patrol)</i>	

- **ATM Machine:** A Mountain America Credit Union ATM is located in the lobby of the High Tech Learning Center building and assessable during the WREB exam hours.
- **Food Services Onsite:** The Campus Bookstore (East of the clinic entrance off the lobby) has beverages and snacks available for purchase. Hours are: 8:00am – 6:00pm Mon. – Thurs., Friday 8:00am-4:00pm, Closed Saturday. Beverage and snack vending machines are located at the east end of the lobby in the hallway just past the cashier's office. There are several fast food restaurants on 9000 South approximately 2-5 miles east of campus.

2. Preparing for the Hygiene Exam

- **Patient Screening:** The dental hygiene clinic will be available Monday, April 15th from 9:00am-11:00am and 1:00pm-3:00pm for candidates needing to conduct screenings on their exam patients. Salt Lake Community College will **NOT** provide patients for candidates. Candidates must not ask the school for patients or patient records at any time during the WREB exams.

**Contact the SLCC clinic manager to schedule a screening appointment time at (801) 957-6005.*

- **Radiographs:** Access to radiograph equipment area during the exams will not be possible. To accommodate radiograph needs the Dental Hygiene Clinic will be available Monday, April 15th from 9:00am-11:00am and 1:00pm-3:00pm for candidates to expose and develop radiographs on their exam patients. Candidates need to provide their own film, holders and mounts. No digital radiographs will be available.

**Contact the SLCC clinic manager to schedule a radiology appointment time at (801) 957-6005*

- **Administration of Local Anesthetic:** Practitioner(s) (meeting prescribed criteria as stated in the Candidate Guide) will be **AVAILABLE** during the exam to administer local anesthesia to Candidate Patients upon request. All requests **MUST** be made with a minimum 24hr advanced notice with the SLCC School Coordinator. (No additional fees will be charged for anesthesia services)
- **Equipment, Instruments and Expendable Dental Materials:** Refer to the respective WREB Candidate Guide for a list of materials and armamentarium that the Candidate must provide. Each operatory is equipped with one (1) ADEC Dental chair, one (1) delivery unit equipped with an air/water syringe, high volume suction and low volume suction, one (1) slow speed handpiece hookup pictured below. A limited amount of instruments will be available on an emergency basis only, accessed by the clinical assistant from the sterilization area. (no additional fees will be charged if necessary). Expendable materials are located at both ends of the clinic exam area on supply carts.

A. Handpiece and Propphy Angle Hookups: **NO handpieces will be available for use or rent from SLCC.** Fiber optic handpieces are NOT compatible with our dental units, example of correct handpiece style is pictured below. The air pressure to each operatory chair, and all handpieces, is factory set at approximately 35 to 50 psi. Please ensure that any slow-speed handpiece you bring has a working gasket and will operate effectively within these parameters.

**Any equipment malfunctions should be reported to the clinic supervisor, Ms. Wendee Mitchell (801) 957-6005*



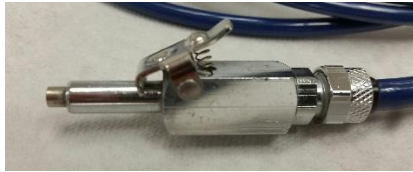
B. Sonic/Ultrasonic Devices: WREB allows the use of sonic/ultrasonic devices as an adjunct to calculus removal. All operatories are equipped for hookup of sonic/ultrasonic devices as specified below. If you are using your own Ultrasonic scaling equipment/unit: an A-dec quick disconnect plug must be on the water hose to connect to the dental unit (see picture below).

The clinic has a limited number of 30K Cavitron® units available for use during the exam at no additional fee. **Please make Caviton® requests after your clinical orientation with the school coordinator.*

Ultrasonic inserts and handpieces must be 30K to be compatible with SLCC Cavitron® units.

Candidates are responsible for providing 30K inserts/tips and handpieces for their own use if possible.

***A limited quantity of handpieces or insert tips are available if necessary.**



*Example of compatible quick disconnect water attachment for A-dec dental units.

C. Air/Water Syringe Tips: All air/water syringe tips used during the exams are disposable. Additional tips are available if needed on supply carts.

D. Blood Pressure Cuffs and Stethoscopes: Candidates are responsible for supplying their own blood pressure cuffs and stethoscopes. SLCC will not have any available for candidate use during the exams.

E. Expendable Materials: Expendable dental materials supplied by the school are located on both ends of the clinic exam area on supply carts. **See complete list on Appendix A.** (items not listed are responsibility of Candidate).

- **Sterilization Services:** Candidates should arrive with all instruments previously sterilized for exams. Sterilization supplies will be available on the supply carts and in the sterilization area. Sterilization hours are 7:00am to 5:00pm each weekday and 7:00am to 4:00pm on Saturday.

If you choose to have your instruments sterilized by the SLCC clinic upon completion of your exams, give your bagged instruments, with your candidate number to the sterilization attendant located in room (135H). They will provide you with a sterilization retrieval receipt. Please allow 24 hours for sterilization process.

**Note, we will not clean or remove your items from their labeled bags or cassettes prior to sterilization.*

If you choose not to have your instruments sterilized by SLCC upon completion of your exams, give your contaminated bagged instruments, identified with your candidate number to the sterilization attendant located in room (135H). They will provide you with a sterilization retrieval receipt; your items will be enclosed in a biohazard bag marked NON-Sterile and placed at the front desk for immediate pickup.

*All instruments can be claimed at the clinic reception desk in HTC 133 by candidates using their sterilization retrieval receipt by 5:00pm each weekday and 4:00pm Saturday

- **Candidates retaking onsite will need their instruments sterilized prior to retake clinic entrance. Notify the reception desk attendant immediately so that priority can be placed on sterilizing your instruments for retakes. SLCC does have a limited quantity of items available when necessary to loan at no additional cost. Requests can be made by candidate in the sterilization area (HTC135H).**
- **Salt Lake Community College is not responsible for lost, stolen or damaged instruments**

3. Preparing for the Local Anesthesia Exam

- **Equipment, Instruments and Expendable Dental Materials:** Refer to the respective WREB Candidate Guide for a list of materials and armamentarium that the Candidate must provide. Each operatory is equipped with one (1) ADEC Dental chair, one (1) delivery unit equipped with an air/water syringe, high volume suction and low volume suction. A limited number of instruments are available on an emergency basis only, requests can be made by candidate at sterilization (135H). (no additional fees will be charged if necessary). Expendable materials are located at both ends of the clinic exam area on supply carts.

A. Air/Water Syringe Tips: Disposable air/water syringe tips will be utilized during all exams and are provided by the SLCC DHY clinic. Additional tips if necessary are located on the supply carts.

B. Expendable Materials: Expendable local anesthesia materials supplied by the school are located in the clinic exam area on the supply cart. **See complete list on Appendix B.** (items not listed are responsibility of Candidate).

- **Sterilization Services:** Candidates should arrive with all instruments previously sterilized for exams. Sterilization supplies will be available on the supply carts and in the sterilization area. Sterilization hours are 7:00am to 5:00pm each weekday and 7:00am to 4:00pm on Saturday.

If you choose to have your instruments sterilized by the SLCC clinic upon completion of your exams, give your bagged instruments, with your candidate number to the sterilization attendant located in room (135H). They will provide you with a sterilization retrieval receipt. Please allow 24 hours for sterilization process.

*Note, we will not clean or remove your items from their labeled bags or cassettes prior to sterilization.

If you choose not to have your instruments sterilized by SLCC upon completion of your exams, give your contaminated bagged instruments, identified with your candidate number to the sterilization attendant located in room (135H). They will provide you with a sterilization retrieval receipt; your items will be enclosed in a biohazard bag marked NON-Sterile and placed at the front desk for immediate pickup.

*All instruments can be claimed at the clinic reception desk in HTC 133 by candidates using their sterilization retrieval receipt by 5:00pm each weekday and 4:00pm Saturday

- **Candidates retaking local onsite will need their instruments sterilized prior to retake clinic entrance. Notify the reception desk attendant immediately so that priority can be placed on sterilizing your instruments for retakes. SLCC does have a limited quantity of items available when necessary to loan at no additional cost. Requests can be made by candidate in the sterilization area (HTC135H).**
- **Salt Lake Community College is not responsible for lost, stolen or damaged instruments**

4. During the Clinical Exam

- **Dental Operatory Units:** Each operatory is equipped with an ADEC 411 dental chair/unit which includes the delivery system, (2) air/water syringes, (2) high volume suctions, (1) low volume suction, (1) quick connect air & water port, (1) overhead LED light, (1) portable cart for additional writing or clinical space, (1) operator stool and (1) assistant stool (1) view box. All units are ambidextrous; however, some operatories are

configured with countertops etc. in better locations than others are for left-handed candidates. Please notify WREB if you are left-handed to assist us in assigning the best clinical space to meet your needs.

- **Infection Control (Surface Asepsis):** Dental unit headrest, handles, light, air-water syringes, suction/accessory arms will be covered with appropriate barriers as demonstrated during clinic tour and are provided on the supply cart or in the operatory. Any contaminated surfaces on dental units, countertops etc. should be disinfected with OPTIM 33TB-Wipes and/or Lysol spray after use. Disinfecting spray and wipes are available in each operatory. Disposable plastic over gloves are available for candidates (on cart).

Appropriate protective clothing, including gowns must be worn in occupational exposure situations. SLCC will not provide barrier gowns unless needed on an emergency basis. Nitrile (non-latex) gloves and masks are available from the supply carts located in the clinic. Candidates are to provide their own OSHA-acceptable protective glasses for themselves and their patients. Antibacterial soap is available at all sinks within the clinic. Hand sanitizer is available on each operatory countertop.

A. Hazardous Waste Disposal (exam-type specific):

- **Hygiene:** Any blood/saliva-soaked waste is considered hazardous and must be disposed of in red biohazard bags (available on the supply carts). Biohazard bags may be attached to the sides of the suction arm. At the end of each session, bags should be sealed with self-sealing strip and brought to sterilization where they will be placed in biohazard waste containers.
- **Local Anesthesia:** Same as Hygiene exam

B. Sharps Disposal: All needles, anesthetic cartridges and any other disposable sharps are to be placed in the red plastic sharps containers located on each countertop area. NO disposable sharps should be left with instruments taken to sterilization from clinical area (operatory).

- **Emergency Medical Equipment:**

In the case of any medical emergency candidate must immediately notify WREB chief examiner.

- An emergency medical kit is located in the labeled cabinet of operatory 9.
- Emergency oxygen units are available in specific locations that will be indicated during the clinic tour.
- AED unit is available on the north wall between operatories 12 and 13

In order to alert WREB/clinic personnel to a medical emergency occurring with your patient, the following protocol must be followed:

- Remain with your patient. Do NOT leave him/her unattended.
- You must alert & send a nearby assistant/responsible person to report the problem to the WREB Chief Examiner.
- The WREB Chief Examiner will make a judgment as to whether an emergency requiring outside help exists.
- If needed assistant/responsible person will be sent to the nearest phone to activate

the Emergency Medical System (EMS) by dialing 911.

As appropriate for type of emergency:

- Place the patient in either a sitting or supine position,
- Assess responsiveness
- Check breathing
- Check airway for blockage/aspiration
- Check pulse
- Be prepared to perform CPR, as indicated

*Candidate assumes all responsibility for medical emergency management of patient including resuscitative procedure & administration of emergency oxygen until relieved by EMS personnel.

5. Travel and Accommodation Information

- **Airport Information:** Salt Lake International Airport serves the Salt Lake City area. Most major carriers fly to Salt Lake International Airport.
- **Ground Transportation:** For non-peak drive hours, expect a minimum drive time of approximately 30 minutes/peak drive time may be an hour +. Transportation methods available at the airport include but are not limited to:
 - a. **Shuttle Bus**
Express Shuttle 1-801-596-1600 www.expressshuttleutah.com
(\$25 for first person, \$10 for each additional in the same group, maximum of 7 people one way/ Hotel drop off rates may vary/ Reservations required 16 hrs. in advance)
 - b. **Taxi Service**
Approximate one-way cab fare (without tip) is \$45.00
Yellow Cab 1-801-521-2100 www.yellowcabutah.com
AAA Cab Co. 1-801-641-4964
City Cab Co. 1-801-363-5550
*Uber & Lyft are also available in SLC by smart phone App
 - c. **Rental Car**
Salt Lake is served by many major car rental companies:

Alamo 1-888 426-3299	Avis 1-800-831-2847
Budget 1-800-237-7251	Enterprise 1-800-736-8222
Hertz 1-800-654-3131	Thrifty 1-800-847-4389

Hotel Accommodations: All reservations should be made directly with hotels/motels. Some nearby accommodations are listed below:

Hotel Name	Address	Distance from SLCC	Phone	Website
Hampton Inn & Suites	3957 Center Park Dr. West Jordan, UT	2.5 miles	801-280-7300	Hamptoninn3@hilton.com
My Place Hotel	7424 S. Campus View Dr. West Jordan, UT	3.1 miles	801-930-1122	www.myplacehotels.com
Country Inn and Suites	10499 So Jordan Gateway South Jordan UT	4.1 miles	801-553-1151	www.countryinns.com
Hilton Garden Inn	277 W Segoe Lily Drive Sandy, UT 84070	4.1 miles	801-352-9400	www.hiltongardeninn3.hilton.com
Hyatt House Salt Lake City/Sandy	9685 South Monroe Street Sandy, UT 84070	5 miles	801-304-5700	www.hyatt.com
Residence Inn by Marriott	7558 South Plaza Center Dr. West Jordan, UT 84084	5.2	801-282-1800	www.marriott.com
Embassy Suites by Hilton South Jordan Salt Lake City	10333 S. Jordan Gateway South Jordan, UT 84095	5.3	801-617-4040	www.embassysuites3.hilton.com

SALT LAKE COMMUNITY COLLEGE JORDAN CAMPUS



***J-2 IS THE DESIGNATED PARKING LOT DURING WREB EXAMS**

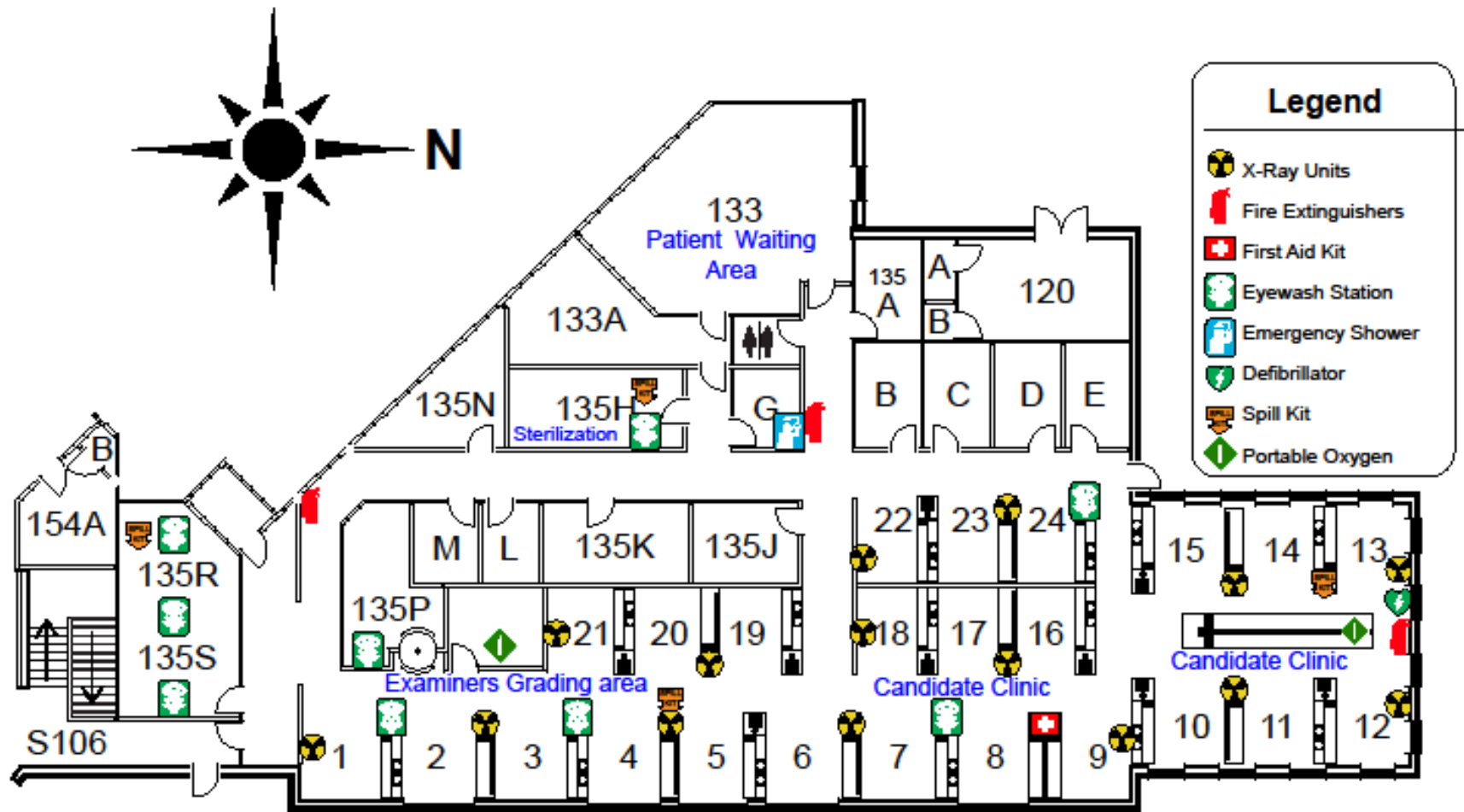
SALT LAKE COMMUNITY COLLEGE (JORDAN CAMPUS) MAP LINK:

<https://myatlasccms.com/map/?id=726#!ct/11618,15962,11084,10604?ce/9198>

Salt Lake Community College

Dental Hygiene Clinic

Jordan Campus HTC



Expendable Dental Materials Appendices

APPENDIX A – Expendable Dental Hygiene Materials List Provided by Exam Site Host (School)		
To be provided in sufficient quantities for all Dental Hygiene Candidates		
2x2 gauze squares	Cotton-tip applicators	Paper towels
Air/water syringe tips	Drinking cups	Patient bib clips, disposable
Antimicrobial mouthwash	Face masks	Patient napkins/bibs
Anesthetic(s)	Facial tissue	Prophy angles & paste
Local anesthetic(s) • Lidocaine 2% w/1:100,000 epi • Mepivacaine 3% plain	Gloves	Sanitizing materials
• Topical anesthetic(s) • Benzocaine gel 5% • Lidocaine ointment- <i>available upon request</i>	• Gloves, nonlatex (XS,S,M,L,XL)	Soap
Autoclave bags, small	• Overgloves	Standard saliva ejectors
Autoclave bags, medium	Headrest covers	Surface disinfectant
Autoclave tape	Instrument trays, disposable	Tray covers
Barrier covers/tape	Syringe Needles 25g Long & Short 27g Long & Short	Trash bags

APPENDIX B – Expendable Local Anesthesia Materials List Provided by Exam Site Host (School)		
To be provided in sufficient quantities for all Local Anesthesia Candidates		
2x2 gauze squares	Cotton-tip applicators	Paper towels
Air/water syringe tips	Drinking cups	Patient bib clips, disposable
Antimicrobial mouthwash	Face masks	Patient napkins/bibs
Anesthetic(s)	Facial tissue	Sanitizing materials
Local anesthetic(s) • Lidocaine 2% w/1:100,000 epi • Mepivacaine 3% plain	Gloves	Soap
Topical anesthetic(s) • Benzocaine gel 5% • Lidocaine ointment- <i>available upon request</i>	• Gloves, nonlatex (XS,S,M,L,XL)	Standard saliva ejectors
Autoclave bags, small	• Overgloves	Surface disinfectant
Autoclave bags, medium	Headrest covers	Tray covers
Autoclave tape	Instrument trays, disposable	Trash bags
Barrier covers/tape	Syringe Needles 25g Long & Short 27g Long & Short	