

# **Eastern Washington University**



**Exam Site Information for Candidates  
Western Regional Examining Board (WREB)  
2019 WREB Hygiene Examination**

**Eastern Washington University  
Dental Hygiene Department/ Clinic  
Health Sciences Building #160  
310 N. Riverpoint Blvd. Box E  
Spokane, WA 99202  
509-828-1300**

## **Exam Site Information for Candidates**

### **2019 WREB Dental Hygiene, Local Anesthesia & Restorative Examinations**

#### **Table of Contents**

##### **1. School Facility and Services**

- Clinic Address:
- Building Access and Hours
- Parking
- Security and Emergency Services
- ATM Machine
- Food Services Onsite

##### **2. Preparing for the Exam**

- Patient Screening
- Radiographs
- Administration of Local Anesthetic – Practitioner Availability
- Dental Operatory Units
- Equipment, Instruments and Expendable Materials
- Sterilization Services

##### **3. During the Exam**

- Infection Control (Surface Asepsis)
- Medical Emergencies and Equipment

##### **4. Travel and Accommodation Information**

- Airport Information
- Ground Transportation
- Hotel Accommodation

##### **5. Appendices**

- Campus Map
- Clinic Floor Plan
- Expendable Dental Materials Lists

## 1. School Facility and Services

- **Location, Building Access and Hours:** Dental hygiene **CLINIC** address, telephone number and contact name for questions regarding the school, equipment, etc. Directions to Clinic entrance; building open 6:00am-6:00pm daily for duration of exam.

### **Clinic Address:**

Eastern Washington University Dental Hygiene Clinic  
Health Sciences Bldg. #160  
310 N. Riverpoint Blvd.  
Spokane, WA 99202

**Telephone number:** 509-828-1292

**Contact name for questions:** Jennifer Hinkle, Clinic Supervisor II

**Directions to Clinic entrance:** Access is South, West and East of the Health Science Building. Building opens at 6 am. On exam days.

- **Parking:** Specify parking availability for Candidates and Patients. Include parking lot hours, parking restrictions, parking fees, acceptable forms of payment, links to complimentary parking passes (if applicable).

Pay by plate parking is hourly in parking lot North (across the street, Green lot) and East (Orange lot) of the Clinic for Candidates. Pay by plate Patient parking is in the parking lot North of clinic.

Your license plate number will be your permit.

Get hourly and daily permits from the pay stations or the Whoosh app (whoosh.com)

Use pay stations in parking lots or the [Whoosh](#) app on your smartphone.

Pay stations only accept One-dollar bills (no coins) and accepts Visa, MasterCard, Discover.

Parking fees: \$1.00 per hour or \$4.00 to \$6.00 a day.

- **Security and Emergency Services:** Onsite Security contact information and protocol.

Campus Security: 509-358-7995

Emergency Services: 9-1-1

The WSU Spokane Campus has a 24-hour safety and security office open every day of the year. All safety and security officers on campus are trained professionals, however the city of Spokane police and fire officials are the first responders in the event of an emergency.

- **ATM Machine:** Availability and location on campus, if applicable.

Not applicable

- **Food Services Onsite:** Availability and location on campus, if applicable.

### Hours of Service

#### Academic Center Cafe

Mon – Thu: 7:30 a.m. to 8 p.m.

*(6 p.m. in summer)*

Fridays: 7:30 a.m. to 5 p.m.

Weekends: closed

#### Nursing Building Cafe

Weekdays: 7:30 a.m. to 3 p.m.

#### For catering, contact:

Barbara Pagarigan

[freshplate@gmail.com](mailto:freshplate@gmail.com)

ph: 509-808-6195

## 2. Preparing for the Hygiene Exam

- **Patient Screening:** Candidates must provide their own patient. EWU does not furnish any patients or make any records available for patient screening prior to the exam. Eastern Washington University does not provide clinical space for patient screening.

**Note:** A practitioner(s) from the school **is not** available to administer local anesthesia to candidates' patients. There are no exceptions to this policy.

- **Radiographs:** Candidates are required to provide x-rays for exam, however, access to digital x-rays is easily accessible on the candidate clinic floor and may be required for backup patients. Provide information regarding fees and whether equipment produces digital or conventional radiographs or both.

Exposure are digital: \$2.50 per film (up to a maximum of \$25.00).

EWU can accommodate printed digital x-rays and conventional x-rays.

EWU does not expose or print any digital x-rays on exam days.

- **Administration of Local Anesthetic:** Practitioner(s) from the school is **NOT AVAILABLE** to administer local anesthesia to Candidate Patients. There are no exceptions to this policy.

- **Equipment, Instruments and Expendable Dental Materials:** Refer to the respective WREB Candidate Guide for a list of materials and armamentarium that the Candidate must provide.

### **Handpiece and Propy Angle Hookups:**

EWU clinics are equipped with ADEC chairs and workstations. Two varieties of handpiece hoses are available on each unit: a 4-hole standard ADEC high-speed handpiece hose and a 4-hole Midwest Quick-Connect hose (for slow speed) with built-in swivel. EWU provides a high-speed handpiece and a slow speed handpiece with a latch head at each unit for the restorative exam. If a handpiece is requested for the hygiene exam, one will be made available. Star Dentaleze makes both handpieces. Candidates need to provide their own prophy angles.

#### **A. Sonic/Ultrasonic Devices:**

All operatories are equipped with a 30 MHz ultrasonic Dentsply Cavitron unit and a Dentsply SteriMate handpiece. Candidates **must** provide their own 30 MHz ultrasonic inserts.

#### **B. Air/Water Syringe Tips:**

AWS tips are Metal. A-Dec air/water syringe tips are provided, **one per unit**. Please return tips to be sterilized and reused. If candidates need more than one syringe tip, they are available for purchase. Candidates may bring an A-dec air/water syringe tip with them or be prepared to purchase one at EWU for their exam. A-Dec recommends metal tips for safety reasons. This cost is \$6.25 including tax. Exact cash, checks, or credit cards are accepted.

**C. Blood Pressure Cuffs and Stethoscopes:** Blood pressure cuffs are located at each unit. Candidates need to bring their own stethoscope.

**D. Expendable Materials:** Expendable dental materials supplied by the school are noted in **Appendix A**. Add the expendable list to your document (items not listed are responsibility of Candidate).

See appendix A

- **Sterilization Services:**

LIMITED STERILIZATION is available. Candidates should arrive with all items needed previously sterilized. In cases where an item is dropped, or otherwise contaminated, a StatIM steam sterilizer is available. **Hours of sterilization are 7am to 5pm.**

### 3. Preparing for the Local Anesthesia Exam

- **Equipment, Instruments and Expendable Dental Materials:** Refer to the respective WREB Candidate Guide for a list of materials and armamentarium that the Candidate must provide.

#### A. Air/Water Syringe Tips:

AWS tips are non-disposable. Place the used tips on “DIRTY” cart in the basket by the supply table.

This cost is \$6.25 including tax. Exact cash, checks, or credit cards are accepted.

#### B. Expendable Materials:

Expendable dental materials supplied by the school are noted in **Appendix B**.

See appendix B

- **Sterilization Services:**

LIMITED STERILIZATION is available. Candidates should arrive with all items needed previously sterilized. In cases where an item is dropped, or otherwise contaminated, a StatIM steam sterilizer is available. **Hours of sterilization are 7am to 5pm.**

### 4. Preparing for the Restorative Exam

- **Equipment, Instruments and Expendable Dental Materials:** Refer to the respective WREB Candidate Guide for a list of materials and armamentarium that the Candidate must provide.

#### A. Handpiece and Prophy Angle Hookups:

EWU clinics are equipped with ADEC chairs and workstations. Two varieties of handpiece hoses are available on each unit: a 4-hole standard ADEC high-speed handpiece hose and a 4-hole Midwest Quick-Connect hose (for slow speed) with built- in swivel. EWU provides a Star 430SWL fiber optic high-speed handpiece and a Titan 3 slow speed motor, motor to angle adapter, and a latch head handpiece at each unit for the restorative exam. Star Dentaleze makes both handpieces.

#### B. Air/Water Syringe Tips:

AWS tips are non-disposable. Place the used tips on “DIRTY” cart in the basket by the supply table.

This cost is \$6.25 including tax. Exact cash, checks, or credit cards are accepted.

### C. Curing Lights:

Valo curing lights and shields are available at each unit during the Restorative Exam.

- D. Expendable Materials:** Expendable dental materials supplied by the school are noted in **Appendix C**.  
See appendix C

## 5. During the Clinical Exam

- **Dental Operatory Units:**

**A-Dec Chairs: 1021**

**A-Dec Delivery Systems: 4631**

- **Infection Control (Surface Asepsis):** Specify asepsis protocols pertinent to the exam only (i.e. dental unit, countertops, patient chair, light handles, etc.).

Remember to wear appropriate Personal Protective Equipment (PPE) including gloves, safety eyewear, and masks for all cleanup activities.

Remove **contaminated surface covers** without contaminating the previously disinfected surfaces.

Remove the other covers, exam gloves, bibs, and other disposables. It should then be disposed of in the large covered garbage containers. The uncovered garbage containers under sinks are for paper towel disposal only.

Contaminated needles and used anesthetic cartridges are regulated waste and are placed in the Sharps Containers and the black RCRA containers provided. DO NOT place LA protector cards in the sharps container; these can go into the trash.

Optim33 wipes are provided at each operatory. Wipe/ wipe all surfaces touched except chairs. Chairs are cleaned with soap and water only.

### A. Hazardous Waste Disposal (exam-type specific):

- **Hygiene:** Procedure for disposal of blood/saliva-soaked waste.
- **Local Anesthesia:** Procedure for disposal of blood/saliva-soaked waste.
- **Restorative:** Procedure for disposal of amalgam scraps.

Blood-soaked/caked material from which fluid may be squeezed and fluids in quantities over 20 cc's (20 cc's equal slightly less than 1/8 cup) are disposed of in red plastic bio hazard bags.

OSHA defines regulated waste as "liquid or semi-liquid blood and other potentially infectious materials, items caked with these materials, items that

would release blood or other potentially infected materials if compressed, pathological or microbiological wastes containing them and contaminated sharps.”

Amalgam scraps are disposed of in containers labeled “Non-contact Amalgam” and located on Islands 1 and 2 in the candidate clinic.

**B. Sharps Disposal:** Indicate location of sharps containers.

Red sharps containers are conveniently located on countertops throughout the examination area.

- **Emergency Medical Equipment:**

**Portable oxygen** tanks are located at the south end (away from windows) of islands 1, 2, and 3 in the clinic. Each oxygen set up contains bag, valve, mask, nasal cannula and pocket mask. (Locations marked with **O2** on floor plan.)

**Phone** is located on the west wall adjacent to operatory #20. (Location marked with **Phone** on floor plan.)

**To reach 9-1-1**, simply dial 911. No prefix is required; however, it does take a few seconds for it to ring through so just hold on. To reach campus security dial 5-358-7995, or #40 from any campus phone.

**Fire Extinguishers:** 3 total fire extinguishers--one located across from chairs 3 and 33, as well as next to the conference room.

How to use: pull the pin, aim at the base of the fire, and squeeze the trigger.

**Do not use if faced with a large or rapidly growing fire, just exit as soon as possible (always escort patient to safety)**

Fire Blankets are located at islands 1 and 3 in the cupboards with the emergency drug kits.

**Nearest Exits:** Main side doors to the clinic, near chair 3. From the building, straight out to the east of the building (left of the elevators). **Meet in the center of the cement walkway to other building**

**Eyewash Stations (please insure that both candidates and patients wear protective eyewear):** Eyewash stations are located at islands 1, 2, and 3, room 179 (darkroom) and room 176 (sterilization room)



**Emergency Oxygen:** 3--Victor Oxygen Therapy Regulators attached to oxygen tanks in portable carts (next to chairs 2, 9 and 31). Each tank has an adult oxygen mask attached to it. Other supplies are available in the emergency cupboards at islands 1 and 3.

**First Aid and Emergency Kits:** Emergency drug kits are located at islands 1 and 3 in the cupboards above and to the left of the sinks and are clearly marked. Chemical ice packs and Perio-retrievers are also available at Island 1. (Locations marked with **Rx** on floor plan.) BP cuffs are mounted on wall by each treatment area; a stethoscope and large cuff is available with each emergency drug kit.

**AED:** Located on the wall between the two restrooms across from chair #3.

## 6. Travel and Accommodation Information

**Airport Information:** Spokane International Airport GEG

- **Ground Transportation:** taxi, Uber, Lyft or Spokane Transit Authority: spokanetransit.com
- **Hotel Accommodations:**

### Hotels with Shuttles

Red Lion River Inn: 700 N Division St Spokane, WA 99202. Phone: 1-800-733-5466

The Holiday Inn at Spokane International Airport 1616 S Windsor Dr. Spokane, WA 99224 Phone: 509-838-1170.

**Please NOTE: If arriving at the clinic from a hotel shuttle please be sure to tell the shuttle driver that your exam is at EWU's Spokane campus, not in Cheney.**

### Hotels directly across the street from the clinic site:

Courtyard by Marriott 401 N. Riverpoint Blvd., Spokane, WA 99202. Phone: 509-456-7600

Fairfield Inn Marriott 311 N. Riverpoint Blvd. Spokane, WA 99202. Phone: 509-747-913

## 7. Maps

- **Campus Map:** Include map of campus and directions to clinic

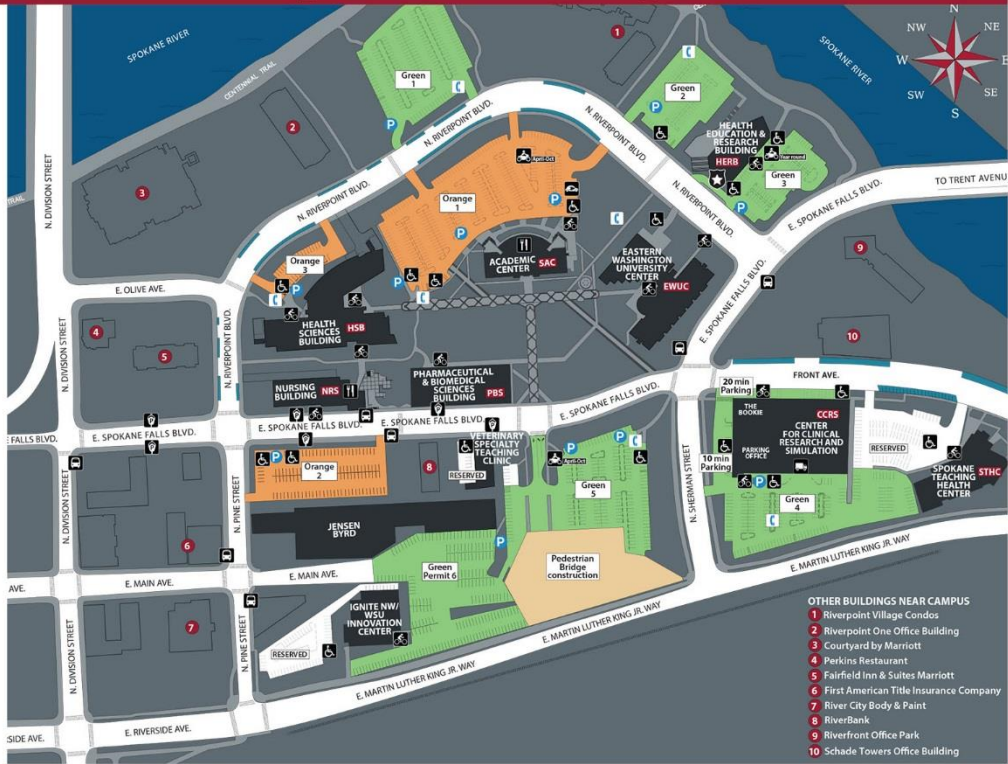
# Campus Map



**PHONE NUMBERS**  
 Campus Safety 509-358-7995  
 Parking 509-368-6999  
 WSU Spokane 509-358-7500  
 EWU Spokane 509-828-1394

- Campus Safety
- Accessible parking
- Bus stop
- Electric car charging station
- Metered parking (2-hour parking)
- Pay Station
- Bike racks
- Motorcycle parking
- Mailing/Shipping/Receiving
- Café
- Campus Safety phones
- Crosswalks
- Patient parking only
- Free parking (1 hr limit)
- Other buildings around campus
- Trails and walking paths
- Other buildings (see menu on right)

27 July 2017



- OTHER BUILDINGS NEAR CAMPUS**
- 1 Riverpoint Village Condos
  - 2 Riverpoint One Office Building
  - 3 Courtyard by Marriott
  - 4 Perkins Restaurant
  - 5 Fairfield Inn & Suites Marriott
  - 6 First American Title Insurance Company
  - 7 River City Body & Paint
  - 8 RiverBank
  - 9 Riverfront Office Park
  - 10 Schade Towers Office Building

## Our Buildings and what's inside

Unless otherwise designated, all are WSU.

**Academic Center - SAC**  
 600 N. Riverpoint Blvd.  
 ASWSUS - Associated Students WSU Spokane  
 Café  
 Chancellor & Vice Chancellors  
 Communication & Development  
 Ed Tech Innovation Center  
 Finance & Budget Office  
 Human Resources  
 Library - WSU/EWU  
 Medicine Administration/Student Services  
 Medicine Dean's Office  
 Office of Research  
 Student Affairs  
 Student Academic Support & Counseling  
 Student Computer Lab - WSU/EWU  
 Technology Support Center

**Eastern Washington University Center - EWUC (SEWU)**  
 668 N. Riverpoint Blvd.  
 Area Health Education Center - EWU  
 Accounting - EWU  
 Addiction Studies - EWU  
 Business Administration - EWU  
 Business & Public Administration, Dean's Office - EWU  
 Creative Writing - EWU  
 Finance & Marketing - EWU  
 Get Lit! Programs - EWU  
 Health Science & Public Health, Dean's Office - EWU  
 Health Service Administration - EWU  
 Information Systems & Business Analytics - EWU  
 Information Technology Services - WSU  
 Management - EWU  
 Public Administration - EWU  
 Public Health - EWU  
 Urban and Regional Planning - EWU  
 Social Work - EWU  
 Student Computer Lab - EWU  
 Student Services - EWU  
 The Writers' Center - EWU

**Health Education & Research Building - HERB (SHER)**  
 665 N. Riverpoint Blvd.  
 Campus Safety  
 Health Policy & Administration  
 IREACH - Initiative for Research and Education  
 to Advance Community Health  
 Nutrition & Exercise Physiology  
 NEP Health & Fitness Clinic

**Health Sciences Building - HSB**  
 310 N. Riverpoint Blvd.  
 Communication Disorders - EWU  
 Dental Hygiene Clinic - EWU

**Health Sciences Building - HSB Cont.**  
 Pharmacotherapy  
 Physical Therapy - EWU  
 Regional Initiatives in Dental Education, RIDE - EWU/UW  
 Research Labs  
 Speech & Hearing Sciences Administration

**Ignite NW/WSU Innovation Center**  
 120 N. Pine St.  
 Applied Sciences Laboratory  
 Other Tenants  
 University Center for Innovation

**Jensen-Byrd Building**  
 131 E. Main Ave.  
 Maintenance Shops

**Nursing Building - NRS**  
 103 E. Spokane Falls Blvd.  
 Café  
 Clinical Performance & Simulation Labs  
 Information Technology Services  
 Nursing Administration/Student Services  
 Nursing Dean's Office  
 Nursing Research

**Pharmaceutical & Biomedical Sciences Building - PBS**  
 205 E. Spokane Falls Blvd.  
 Anatomy Lab  
 Medicine Research  
 Pharmacy Administration/Student Services  
 Pharmacy Dean's Office  
 Pharmacy Clinical Practice Labs  
 Pharmacy Research  
 Walgreens Auditorium

**Center for Clinical Research and Simulation - CCRS**  
 (Previously South Campus Facility)  
 412 E. Spokane Falls Blvd.  
 The Bookie Bookstore  
 Clinical Research  
 Education - WSU  
 Environmental Health & Safety  
 Facilities Operations  
 Facilities Services, Capital Planning  
 Mailing/Shipping/Receiving Services  
 MESA - Mathematics, Engineering, Science Achievement  
 Parking Office  
 Sleep & Performance Research Center

**Spokane Teaching Health Clinic - STHC**  
 624 E. Front Ave.

**Veterinary Specialty Teaching Clinic**  
 218 E. Spokane Falls Blvd.

### VISITOR PARKING

Payment for parking is required in all lots 24 hours a day, every day of the year.

- Pay-and-Display Kiosks**
- Orange and Green parking lots have Pay-and-Display kiosks.
  - Cost is \$1 minimum per hour or \$4 all day in a Green lot and \$6 all day in the Orange lot.
  - Pay by phone with whoosh.
  - Permit must be visible on windshield.
  - Orange 1 is most convenient for visitors.

- Metered Parking**
- Spokane Falls Blvd. and Riverpoint Blvd.
  - A limited number in all Green lots.
  - Meters also are at the Health Sciences Building for clinic patients, 310 N. Riverpoint Blvd.

- Motorcycle Parking with valid permit**
- Motorcycle parking in Orange 1 and Green 5 available from April - Oct
  - Green 3 and southwest corner of Green 5 open year round
  - Or park individually in any parking space

**Parking Services**  
 Center for Clinical Research and Simulation, Room 314  
[spokane.wsu.edu/parking](http://spokane.wsu.edu/parking) | 509-368-6999

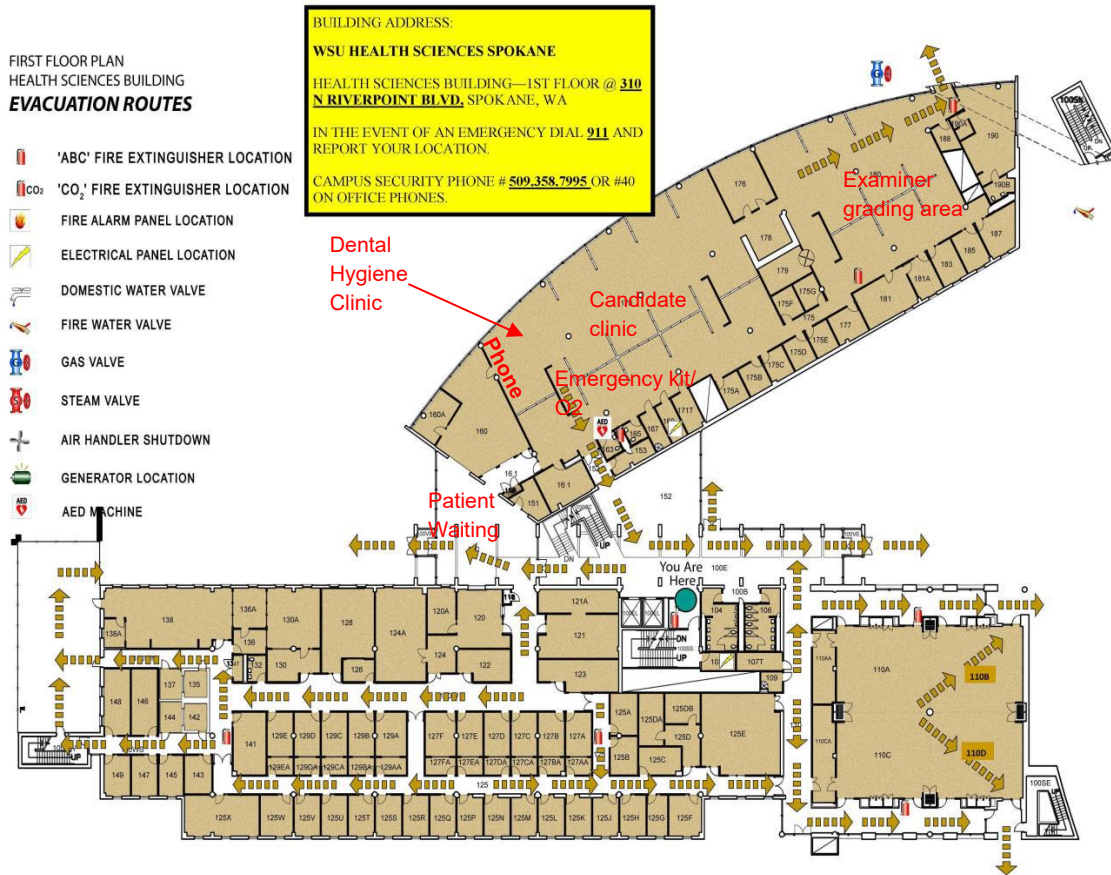
### FOR MORE INFORMATION

**TOBACCO-FREE CAMPUS**  
 WSU Health Sciences Spokane  
[spokane.wsu.edu](http://spokane.wsu.edu) | 509-358-7500  
 Eastern Washington University Spokane  
[ewu.edu](http://ewu.edu) | 509-359-6200

### MAILING AND SHIPPING

PLEASE DO NOT USE BUILDING ADDRESSES FOR

- **Clinic Floor Plan:** Indicate Patient waiting area, Candidate clinic, Examiner grading area, areas of emergency equipment



## Expendable Dental Materials Appendices

<b>APPENDIX A – Expendable Dental Hygiene Materials List Provided by Exam Site Host (School) To be provided in sufficient quantities for all Dental Hygiene Candidates</b>		
2x2 gauze squares	Cotton-tip applicators	Patient bib clips, disposable
Air/water syringe tips	Drinking cups	Patient napkins/bibs
Antimicrobial mouthwash	Face masks	Sanitizing materials
Anesthetic(s)	Facial tissue	Soap
• Local anesthetic(s)	Gloves	Standard saliva ejectors
• Topical anesthetic(s)	• Gloves, nonlatex (S,M,L,XL)	Surface disinfectant
Autoclave bags, small	Headrest covers	Tray covers
Autoclave bags, medium	Instrument trays, disposable	Trash bags
Autoclave tape	Needles: 25 ga. short/long, 27 ga. short/ long	Prophy paste
Barrier covers	Paper towels	

<b>APPENDIX B – Expendable Local Anesthesia Materials List Provided by Exam Site Host (School) To be provided in sufficient quantities for all Local Anesthesia Candidates</b>		
2x2 gauze squares	Cotton-tip applicators	Patient bib clips, disposable
Air/water syringe tips	Drinking cups	Patient napkins/bibs
Antimicrobial mouthwash	Face masks	Sanitizing materials
Anesthetic(s)	Facial tissue	Soap
• Local anesthetic(s)	Gloves	Standard saliva ejectors
• Topical anesthetic(s)	• Gloves, nonlatex (S,M,L,XL)	Surface disinfectant
Autoclave bags, small	Needles: 25 ga. short/long, 27 ga. short/ long	Tray covers
Autoclave bags, medium	Headrest covers	Trash bags
Autoclave tape	Instrument trays, disposable	
Barrier covers	Paper towels	

<b>APPENDIX C – Expendable Restorative Materials List Provided by Exam Site Host (School) To be provided in sufficient quantities for all Restorative Candidates</b>		
2x2 gauze squares	Face masks	Rod posts (mounting Typodont)
Air syringe tips	Gloves	Soap
Amalgamator/Tricherator	• Gloves, nonlatex (S,M,L,XL)	Surface disinfectant
Amalgam scrap container(s)	Instrument trays, disposable	Tray covers
Barrier covers	Paper towels	Trash bags
Cotton-tip applicators	Sanitizing materials	