

**TRUCKEE MEADOWS COMMUNITY
COLLEGE**



**Exam Site Information for Candidates
Western Regional Examining Board (WREB)
2021 WREB Hygiene Examination**

**Truckee Meadows Community College
Dental Hygiene Clinic
7000 Dandini Blvd.
Red Mountain Building-415
Reno, NV 89512
(775) 674-7554**

Exam Site Information for Candidates
2021 WREB Dental Hygiene

Table of Contents

1. School Facility and Services

- Clinic Address, Building Access and Hours
- Parking
- Security and Emergency Services
- ATM Machine
- Food Services Onsite

2. Preparing for the Exam

- Patient Screening
- Radiographs
- Administration of Local Anesthetic – Practitioner Availability
- Equipment, Instruments
- Sterilization Services
- Dental Operatory Units

3. During the Exam

- Infection Control (Surface Asepsis)
- Medical Emergencies and Equipment

4. Travel and Lodging Information

- Airport Information
- Ground Transportation
- Hotel Accommodation

5. Campus Map

6. Clinic Floor Plan

7. Expendable Dental Materials List

1. School Facility and Services:

Clinic Location	7000 Dandini Blvd., Red Mountain Bldg Room 415 Reno, NV 89512
School/Site Coordinator	Lori McDonald, RDH, MA Lmcdonald@tmcc.edu (775) 674-7554
Clinic Assistant Equipment/Directions to Clinic Questions	Jennifer Link, School Dental Clinic Manager Jlink1@tmcc.edu (775) 673-8293

- **Parking/Entrance:** There are no parking fees. Candidates and Patients may park in **Parking Lots G or H**. These two parking lots are closest to the candidate and patient entrance. Parking lot hours are from 6 am-10 pm. Authorized holders of DMV disabled plates or placards may park in designated disabled spaces and must display a valid parking permit on the dashboard. Disabled spots are located in all parking lots near the front of the Red Mountain Building.
- **Parking Restrictions:** Do not park in any metered spots, white loading zones, yellow loading zones, or blue disabled spaces or access areas without proper authorization or placards. Never park, stop, or stand in any red zone, traffic thoroughfare, driveways, grass or planter areas.





- **Security and Emergency Services:** University Police Services: TMCC Substation, Red Mountain Bldg., Room #243
 1. For emergencies, dial 911 from any phone.
 2. Activate any one of the blue emergency call boxes located throughout the campus.
 3. Dial extension (5) 7900 from any college phone.
 4. From any off-campus telephone dial (775) 674-7900.
- **ATM Machine:** Located in Red Mountain Building, 2nd floor Cafeteria.
- **Food Services Onsite:** The cafeteria is located in the Red Mountain Building, 2nd floor and is open 9am-5pm Mon-Thurs and 9am-1pm on Fridays. Due to COVID the cafeteria hours may change. Check with Site Coordinator or Dental Clinic Manager, Ms. Link. There are vending machines on campus, Red Mountain Bldg., 4th floor near Shasta Elevator.

2. Preparing for the Hygiene Exam:

- **Patient Screening:** Patient screening by Candidates will not be available at any time. TMCC will not have additional patients available for the examination to serve as back-up patients.
- **Radiographs:** Candidates are required to provide x-rays for the exam. However, if x-rays are needed the day of the exam, the candidate will be allowed **ONLY** during WREB examination to take digital radiographs and/or Panoramic digital radiographs. RINN XCP kits will be available. Lightboxes are available for film radiographs.

- Duplication services of traditional radiographs will not be available. Payment is cash or credit card. If you are paying by cash, please have exact change
- **Cost of Radiographs:**

Full Mouth Series	\$100.00
Panoramic	\$50.00
4 BXW	\$50.00
Each Periapical	\$10.00



- **Administration of Local Anesthetic:**
 - Practitioners from the school are **NOT AVAILABLE** to administer local anesthesia to Candidate Patients There are **no exceptions** to this policy.
- **Equipment, Instruments and Expendable Dental Materials:** Refer to page 15 in this manual for expendable materials provided by TMCC. Refer to the respective WREB Candidate Guide for a list of materials and armamentarium that the Candidate must provide.

Sonic/Ultrasonic Devices: All operatories are equipped with a **Dentsply 300 Series Ultrasonic Unit** and insert sleeve for your use. The unit is already set up. It is recommended you bring your own insert tips. The tips that fit this unit are any Dentsply inserts without the external water port. We do have insert kits available for rent in limited quantity. Each kit has an insert for heavy deposits, a Slimline Straight, Slimline Right and Left. Rental fee is \$100/kit. Advanced notification is required to reserve your tips at: Jlink1@tmcc.edu or (775) 673-8293. A credit or debit card is required to reserve you insert kit.

- **Handpiece and Propy Angle Hookups:** Candidates should bring their own slow speed handpiece. Each operator is equipped with a four-hole pattern connection. The air pressure at each operator chair and handpiece, is factory set at approximately 35-50 psi. Please ensure any slow handpiece you bring has a working gasket and will operate effectively within these parameters.



- **Air/Water Syringe Tips:** Candidates are provided disposable air/water syringe tips.
- **Blood Pressure Cuffs and Stethoscopes:** Candidates must provide their own Blood Pressure Cuff and Stethoscope.
- **Sterilization Services:** Candidates should arrive with all instruments sterilized. TMCC assumes no responsibility for instruments or personal effects that are lost, broken, stolen, damaged, or not retrieved within 2 days after the closing of the examination. Candidates must clearly print their full name and date and AM or PM session on the autoclave bags, available at each unit. Candidates retaking exam onsite will need to make arrangements with the School Clinic Assistant to have their instruments sterilized prior to exam retake. No sterilization will be available after the last test session.

- **Dental Operatory Units:** There are 14 operatories in the clinic and a separate clinic with 6 operatories for examiners. All dental units are equipped with ADEC dental equipment. All dental units can accommodate both a right- and left-handed operator. Each unit will have a clinician's adjustable delivery system tray with A/W controls, slow handpiece attachment, counter, with foot activated faucet and sink, assistant's table with A/W controls, two high evacuation suctions, and clinician chair. Each operatory light is ceiling mounted for easy access.



3. During the Clinical Exam:

- **Infection Control (Surface Asepsis):** Standard Precautions and Standard Personal Protective Equipment (PPE) are required. TMCC Dental Hygiene Clinic does not provide protective eyewear, face shield, lab coats or gowns for the candidates or patients. Candidates are expected to wear scrubs during the examination. Candidates must furnish their own utility gloves to be worn when handling contaminated instruments through the candidate clinic area. Utility gloves are recommended during disinfectant of unit set up and break down. All candidates are required to adhere to the following infection control steps.
 - **Unit Set-Up: Soap and Water in plastic spray bottle (Under sink)**
 - Clinician chair
 - Dental patient chair
 - **Unit Set-Up: Steri-wipes surface disinfectant, wipe down:**
 - Dental Unit Counter
 - Assistant's table
 - Unit control pad, arm, tray and all hoses (Both clinician and assistant's)
 - Air water syringes, suctions, cavitron hoses/lines.
 - Light handles.

- **Purge water lines** for 2 minutes at the beginning of each testing session.
- **Plastic bag and Sleeve Barriers:** *(Included on the set-up tray)*
 - Full chair cover (bag)
 - Air water/syringes, suction, cavitron handle (Sleeves)
- **Barrier Tape: (Available at each unit)**
 - Unit arms where contact is anticipated
 - Unit control pad
 - Patient chair arms
 - Candidate clinician chair where contact is anticipated
 - Levers and switches
 - Light handles and arm
- **Hazardous Waste Disposal (exam-type specific):**
 - **Hygiene:** Any blood/saliva-soaked waste is considered hazardous and should be disposed of in the available/provided (red) biohazard container. Unless gauze is dripping with blood, all saturated gauze used during the exam may go in the chairside trash bag and receptacle at the sink. A Red Biohazard container will be available for hazardous waste disposal.
 - **Sharps Disposal:** Sharps containers are located in the main clinic on the “Centralized Cabinet” counter for all sharp’s disposal. Candidates should use a one-handed re-capping for safe needle removal. All needles, anesthetic cartridges and any potential sharps are to be placed in the sharps container.
- **Emergency Medical Equipment:** Oxygen First Aid Kit, Perio Retriever, ice packs and juice are located in the clinic’s “Centralized Cabinet” of the clinic. The AED is located outside the clinic in the hallway between room 414 and 413. Fire extinguishers are located in the 415 Sterilization Area and in the Reception Area. Additional fire extinguishers are located in the hallways of the building. Eye wash stations are located on wall next to the sink in 415 Sterilization Area, Dental Lab at northwest sink, and 413 Sterilization Area to right of sink. In the event of an emergency, notify the Chief Examiner. At the discretion of the Chief Examiner, the site Coordinator or Clinic Assistant will **initiate the EMT by calling 911** as indicated on page 4 of this manual.

Candidates are encouraged to locate the nearest exit from the clinic and orientation room. In the event of an emergency, all candidates and patients will exit through the closest exit.

4. Travel and Lodging Information:

- **Airport Information:** Reno-Tahoe International Airport
<https://www.renoairport.com/>
2001 E Plumb Ln, Reno, NV 89502
Phone: (775) 328-6400
Airport Code: RNO

- **Ground Transportation:**
 - **Complimentary Hotel Shuttles/Paid Shuttles:** See link below for list of hotels and transportation services.
<https://www.renoairport.com/tofrom-airport/shuttles>

- **Taxi, Uber, Car Rentals**

- **Public Transportation:** City Bus offers bus routes to TMCC from various points throughout Reno/Sparks area. Click on link below for details about routes, timetables, and fares.
<https://www.renoairport.com/tofrom-airport/public-transportation>

- **Hotel Accommodations:**
 - **Hyatt Place Reno-Tahoe**
1790 E Plumb Ln.
Reno, NV 89502
(775) 826-2500
Distance from TMCC: 7 miles

 - **Aloft Hotel**
2015 Terminal Way
Reno, NV 89502
(775) 501-6330
Distance from TMCC: 7 miles

 - **Grand Sierra Resort (GSR)**
2500 E 2nd Street
Reno, NV 89595
(775) 789-2000
(800) 501-2651
Distance from TMCC: 6 miles

 - **Atlantis Casino and Resort Spa**
3800 S. Virginia Street
Reno, NV 89502
(775) 825-4700
Distance from TMCC: 8 miles

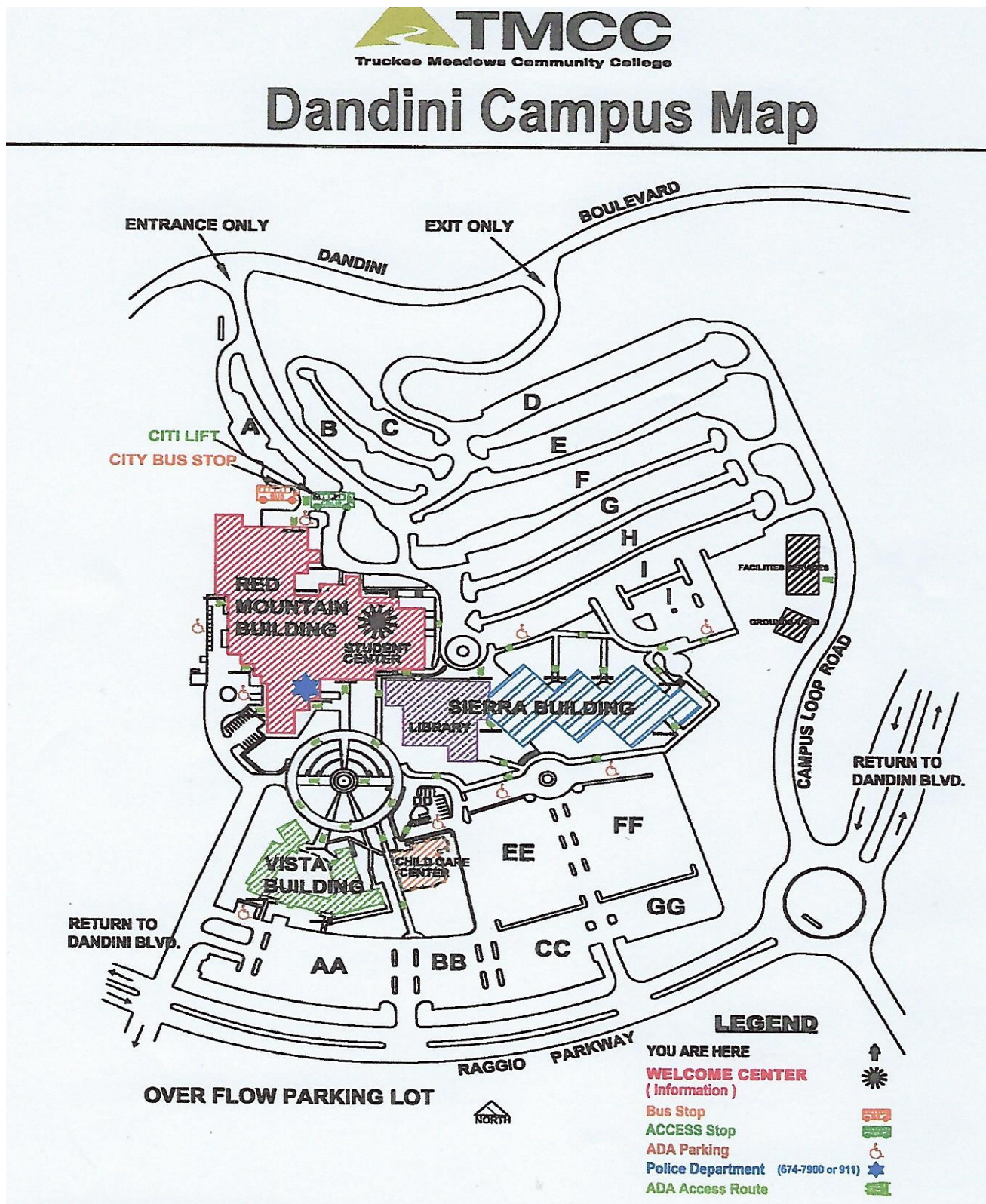
**** Hotels noted below are downtown Reno: Walking distance to restaurants, breweries, shopping.**

- **Eldorado Resort Casino**
345 N. Virginia Street
Reno, NV 89501
Distance to TMCC: 6 miles

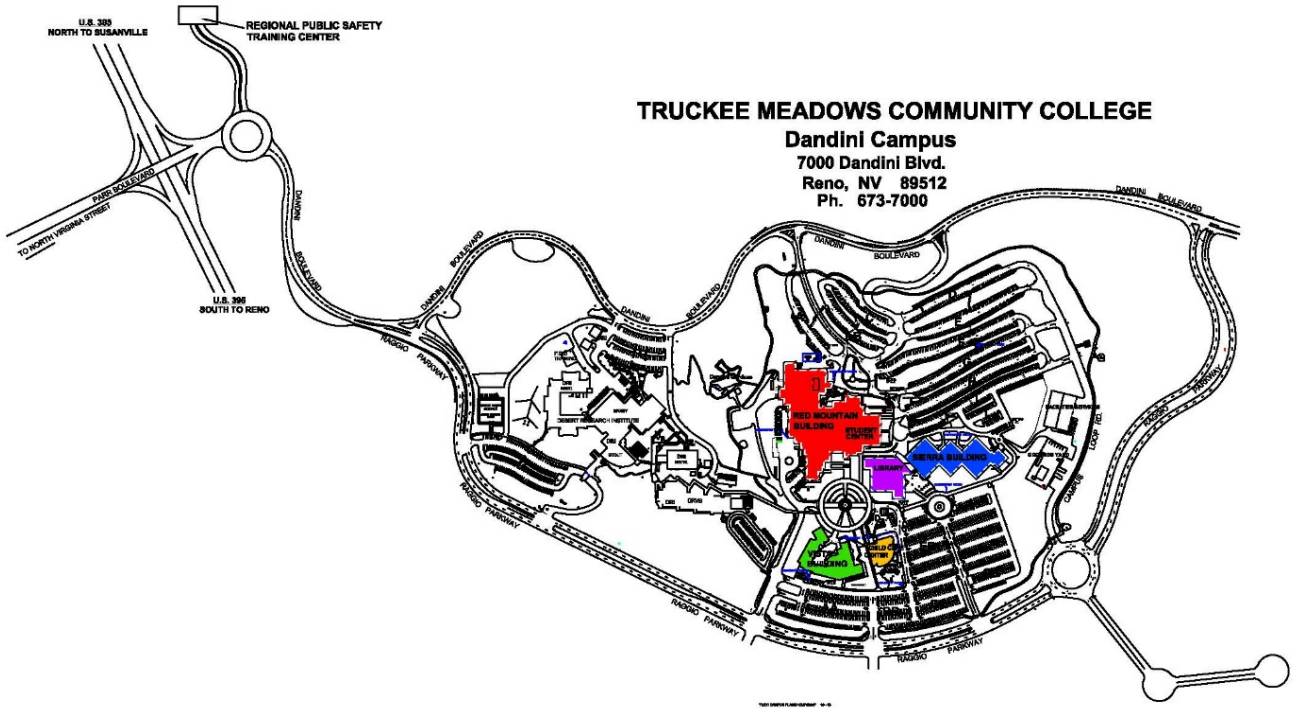
- **Silver Legacy Resort**
407 N. Virginia Street
Reno, NV 89501
Distance from TMCC: 6 miles

- **Circus Circus Hotel Casino**
500 N. Virginia Street
Reno, NV 89501
Distance from TMCC: 6 miles

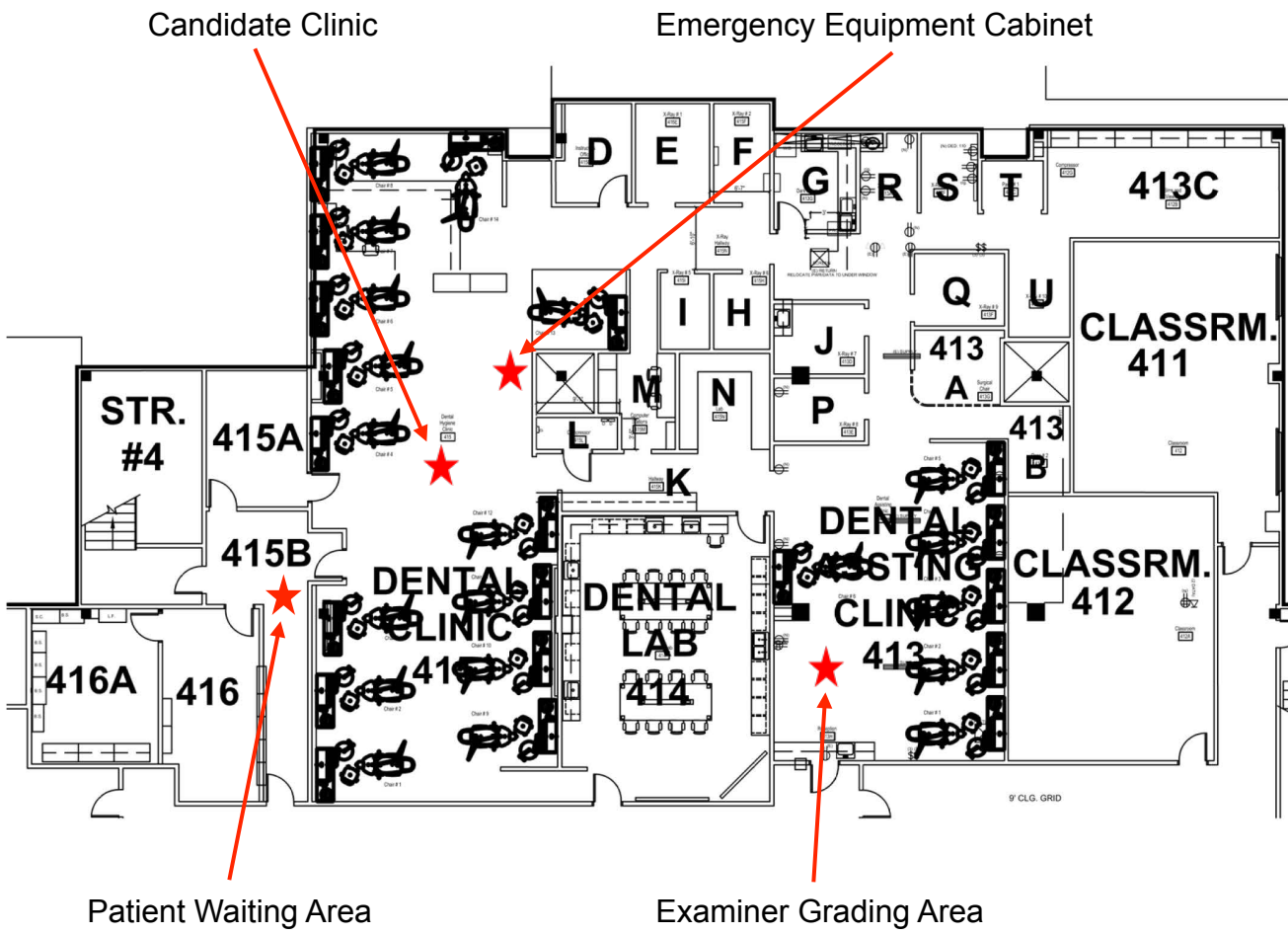
5. Campus Map: TMCC Dandini Campus (Red Mountain Building- 4th Floor)



TMCC Dandini Campus: Interstate 395 North and South



6. Clinic Floor Plan:



Clinic Patient Waiting Area:



7. Expendable Materials: Expendable dental materials supplied by the school.

Expendable Dental Hygiene Materials List Provided by TMCC in sufficient quantities. (Items not listed are responsibility of candidate)		
2X2 gauze squares	Face masks Level 3 and N95	Sanitizing supplies
Air/water syringe tips (Disposable)	Facial tissue	Soap
Antimicrobial mouthwash	Gloves, Nitrile (S, M, L, XL)	Standard saliva ejectors
Topical anesthetic(s)	Overgloves	Standard HVE tips
Anesthetic(s) Needles	Headrest covers	Surface disinfectant
Local anesthetics(s)	Sleeve covers	Trash bags
Autoclave bags (S, M, L)/ Wrap	Paper towels	Tray covers
Barrier covers/tape	Patient bib holders (Disposable)	Bite Blocks (Disposable)
Cotton tip applicators	Patient napkins/bibs	
Drinking cups	Prophy paste	