



WORKING TOGETHER | PURSUING EXCELLENCE | INSPIRING ACHIEVEMENT

Exam Site Information for Candidates
Western Regional Examining Board (WREB)
2020 WREB Hygiene Examination

SCC Dental Hygiene Program
3835 Freeport Blvd
Rodda South Building
Sacramento, CA 95822
916-558-2303

Exam Site Information for Candidates

2020 WREB Dental Hygiene, Local Anesthesia & Restorative Examinations

SACRAMENTO City COLLEGE

SITE INFORMATION FOR WREB EXAMINATIONS

School Coordinator

Melissa Fellman, RDH, MPH 916-558-2096

fellmam@scc.losrios.edu



Site Location

Sacramento City College Dental Hygiene Clinic

Rodda South Building 3835 Freeport Blvd.

Sacramento, CA 95822

Contact Information

Please contact Melissa Fellman at fellmam@scc.losrios.edu.

Responses by phone are limited. Please do not call the college, clinic or other program staff/personnel for information. It is best to use the above email address.



Candidate Information

Patient Screening:

The facility will not be available to screen patients.

Handpiece and Prophy Angle Hook-Ups:

The facility is equipped with ADEC chairs & delivery units with standard connections. For slow speed handpieces, there is a 4-hole pattern connection. No equipment is available for rental.

Disposable Air/Water syringe tips:

Sacramento City College uses disposable air/water syringe tips, which will be provided.

Sonic/Ultrasonic Devices:

All operatories are equipped with water and power connections for ultrasonic scaling devices with a universal water connection. No equipment is available for rental. **Candidates are expected to provide their own instruments and ultrasonic scaling devices.**

X-Rays: Candidates are to come prepared with radiographs for their patients. Digital radiographs and all copies should be printed prior to the exam. If x-rays are needed the day of the exam the candidate must take their own digital X-rays.

Panoramic radiographs will also be available.

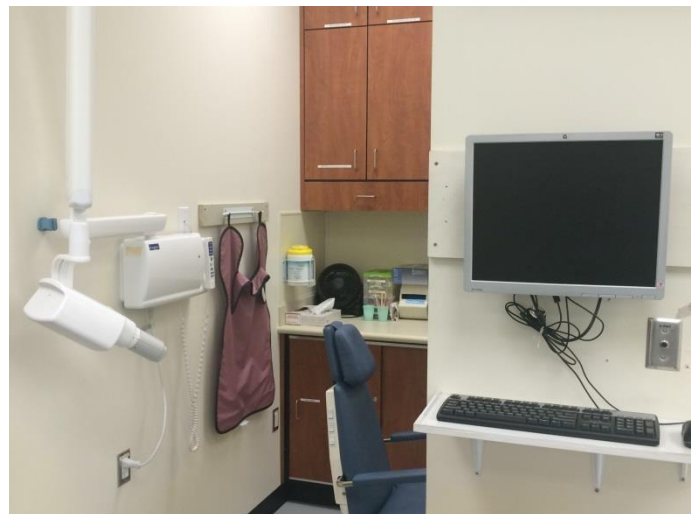
Duplication services of traditional radiographs will not be available. Payment is cash only, please have correct change.

Cost of radiographs:

\$80.00 Full Mouth Series

\$50.00 Panoramic

\$20.00 Each Periapical



Sterilization:

Candidates should arrive with all instruments sterilized.

Sacramento City College assumes no responsibility for instruments or personal effects that are lost, broken, stolen, damaged, or not retrieved within 2 days after the closing of the examination.

Infection Control-Standard Precautions:

Universal Precautions and Standard Personal Protective Equipment (PPE) are required. This includes the use of a lab coat, gloves, masks, and protective eyewear with side protection. Sacramento City College Dental Hygiene does not provide protective eyewear, face shields, lab coats or gowns for the candidates or patients. Sharps containers are located in every operatory and must be used for all sharp's disposal. Red biohazard bags will be available for hazardous waste disposal. Wipes are used for disinfecting the operatory. Plastic barriers are used on all surfaces that may become contaminated.

During the tour, the school coordinator will give a demonstration regarding set up and break down of operatories.

Candidates are to provide their own barriers for their personal ultrasonic scaling device and handle.

Emergency Equipment:

There are 2 portable oxygen tanks, an AED and a Medical Emergency Kit in the clinic. Refer to the location of these devices on clinic map. The location of these devices will also be included in the tour. An Emergency Procedure Binder and a land line to dial 911 are located at the DDS station in the clinic.

Parking:

Daily use parking passes are required. Please will be provided when you arrive for the exam. Please obtain your pass from Barbara Beale at the patient check-in window of the dental clinic.

Security:

Security needs are met by the County Sacramento Sheriff's Department. The Sacramento City College Police Department can be reached at 916-558-2221. Call 911 for an emergency.

Supplies that will be provided:

- surface disinfectant
- paper towels
- soap
- disposable tray covers
- air/ H₂O syringe tips
- trash bags
- standard saliva ejectors
- patient napkins
- autoclave tape & bags
- drinking cups
- 2x2 gauze squares
- standard HVE tips
- cotton swabs
- Sleeve barriers for: slow speed handpiece
- antimicrobial mouthwash
- saliva ejector, HVE, & air/H₂O syringes
- prophylaxis paste
- facial tissue
- barrier tape
- non-latex gloves
- masks
- instrument trays
- anesthetic/needles
- chair covers or head rest covers
- red biohazard bags

Operatories:

There is a total of 18 operatories in the clinic. 12 operatories will be used by the candidates, 6 will be used by the examiners. All of the operatories are ambidextrous and can be set-up for both right and left-handed operators.



Tentative Room Assignments (subject to change—refer to WREB schedule):

All rooms are located in the Rodda South Building

Candidate Orientation-Room 110

Clinical Examination-Room main clinic

Local Anesthesia:

A practitioner from the school is not available to administer local anesthesia to candidates' patients. Sacramento City College Dental Hygiene will not make arrangements for the candidates. If you would like a referral to a local qualified practitioner, please contact the school coordinator.

Food and Beverages:

Depending on the dates of the exam, Sacramento City College may not have food, beverage, or cafeteria services for candidates or their patients. Candidates should inform their patients to eat before coming to the exam or candidates may choose to bring food for their patients. On site refrigeration will not be available. There are vending machines on campus. Food and drink are not allowed in any areas near the candidate clinics or check-in desk during the examination.

Language Translation:

Translation services for candidates and patients are not provided by Sacramento City College Dental Hygiene. Candidates who wish to bring a translator (for languages other than English) must provide all accommodations required. All translators must check in with the WREB Site Coordinator and School Coordinator upon arrival and will only be allowed into the clinical area when their services are required.

Candidate translators must abide by all applicable candidate rules and safety requirements.

General Campus Information:

Sacramento City College is transitioning to a smoke free campus. "Smoking" is defined as the use of products which produce smoke or vapor emissions, including electronic cigarettes. Animals are not allowed on campus or in the dental hygiene facility with the exception of registered service animals. Appropriate documentation will be required.

Hotels:**THE WESTIN SACRAMENTO**

4800 Riverside Blvd., [Sacramento](#), CA [95822](#) United States (USA)

[View Map](#) Reservations: 1-800-230-4134 Group Sales: 1-800-906-2871

4.0 Star Riverfront Hotel in Sacramento County

HYATT REGENCY SACRAMENTO

1209 L St., [Sacramento](#), CA [95814](#) United States (USA)

[View Map](#) Reservations: 1-800-230-4134 Group Sales: 1-800-906-2871

4.0 Star Downtown Hotel in Sacramento County

RESIDENCE INN SACRAMENTO DOWNTOWN CAPITAL PARK

1121 15th St., [Sacramento](#), CA [95814](#) United States (USA)

[View Map](#) Reservations: 1-800-230-4134 Group Sales: 1-800-906-2871

3.0 Star Downtown All-Suite or Extended Stay Hotel in Sacramento County

CITIZEN HOTEL

926 J St., [Sacramento](#), CA [95814](#) United States (USA)

[View Map](#) Reservations: 1-800-230-4134 Group Sales: 1-800-906-2871

4.0 Star Downtown Hotel in Sacramento County

All of the above hotels are within 3 miles of the Sacramento City College Dental Hygiene Clinic. These four hotels are located in downtown Sacramento, with easy access to freeways leading to and from Sacramento International Airport

Restaurants:

Many restaurants are located within 2 miles of campus.

Weather:

The weather in the area is usually mild, with the mornings and evenings typically chilly or foggy. It is suggested to dress in layers as weather conditions can change rapidly.

Directions and Campus Map to Dental Hygiene Clinic from Reno:

2hr 50min

134.1mi

1. I-80 W, then 122.31 miles
2. Merge onto I-80 Bus W/Capital City Fwy W via EXIT 95 toward Sacramento., then 9.34 miles
3. I-80 Bus W/Capital City Fwy W becomes CA-99 S., then 0.62 miles
4. Take the 12th Avenue exit, EXIT 297., then 0.19 miles
5. Keep right to take the Sutterville Rd ramp., then 0.07 miles
6. Merge onto 12th Ave., then 0.06 miles
7. 12th Ave becomes Sutterville Rd., then 0.77 miles
8. Turn right onto Freeport Blvd.
9. Sacramento City College, 3835 FREEPORT BLVD.

The dental clinic is in first parking lot on the right; Lot G

The dental clinic is in the Rooda South building.

AED, Medical Emergency Kit & O2 Tank:

Located at the dental clinic entrance B

Sacramento City College Campus

**SACRAMENTO
CITY
COLLEGE**

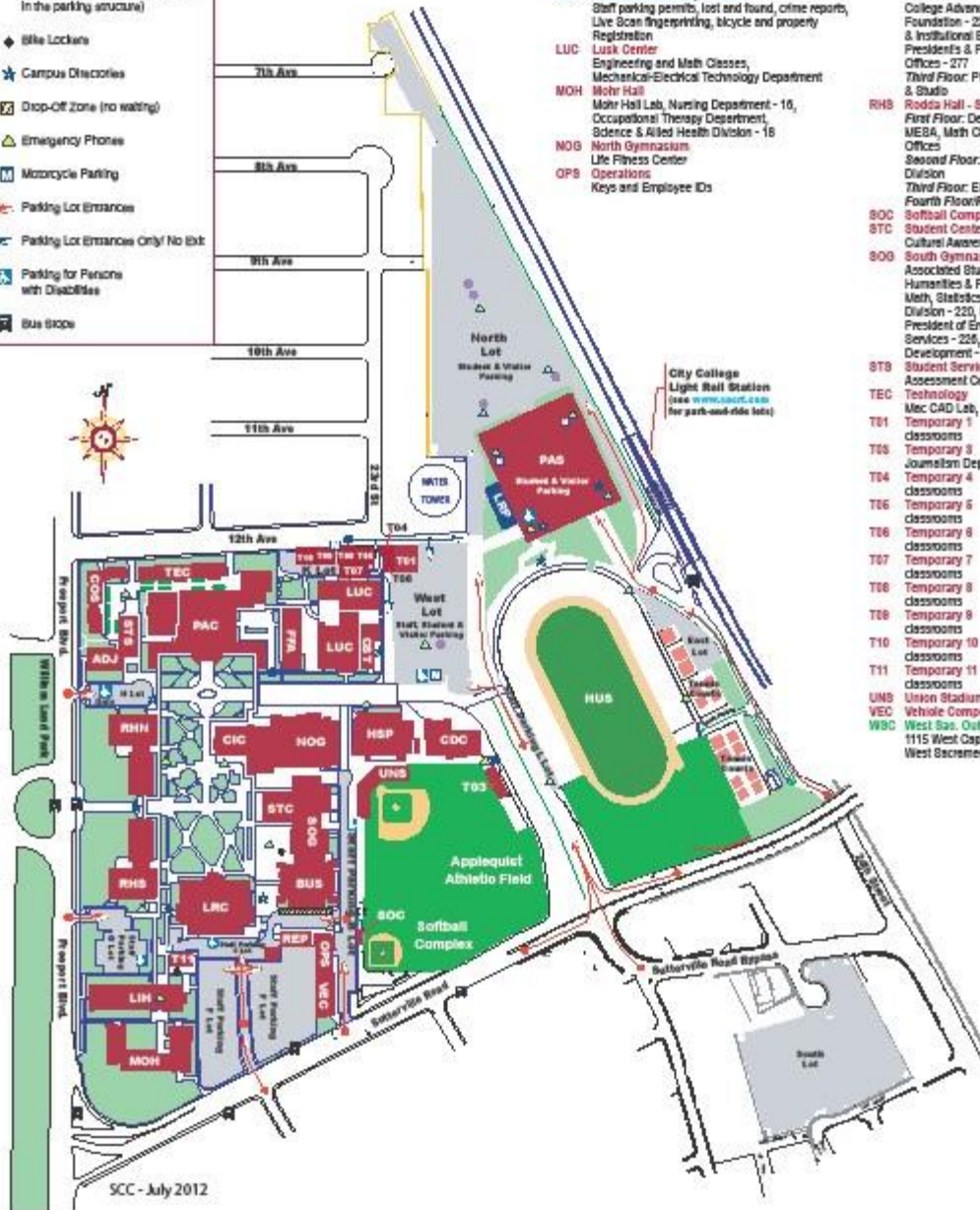
3835 Freeport Blvd.
Sacramento, CA 95822
www.scc.losrios.edu

- ◆ Parking Permit Machines (No daily parking permit machines in the parking structure)
- ◆ Bike Lockers
- ★ Campus Disclosures
- ⊠ Drop-Off Zone (no waiting)
- △ Emergency Phones
- Ⓜ Motorcycle Parking
- Ⓜ Parking Lot Entrances
- Ⓜ Parking Lot Entrances Only/ No Exit
- ♿ Parking for Persons with Disabilities
- Ⓜ Bus Stops

- ADJ** Administration of Justice
Anthropology classes, Disability Resource Center 4-5, R18E-7
- BUS** Business Building
Business Division - 213, Business Division Open Lab - 151, Business Student Center - 224, Computer Services, Learning Resources Academic Computing Lab - 152, Registration and Financial Aid Lab - 153
- CIC** City Cafe
- CDC** Child Development Center
- COB** Cosmetology Building
- CST** College Store
- DVB** Davis Outreach Center
1720 Jade Street, Davis, CA 95616

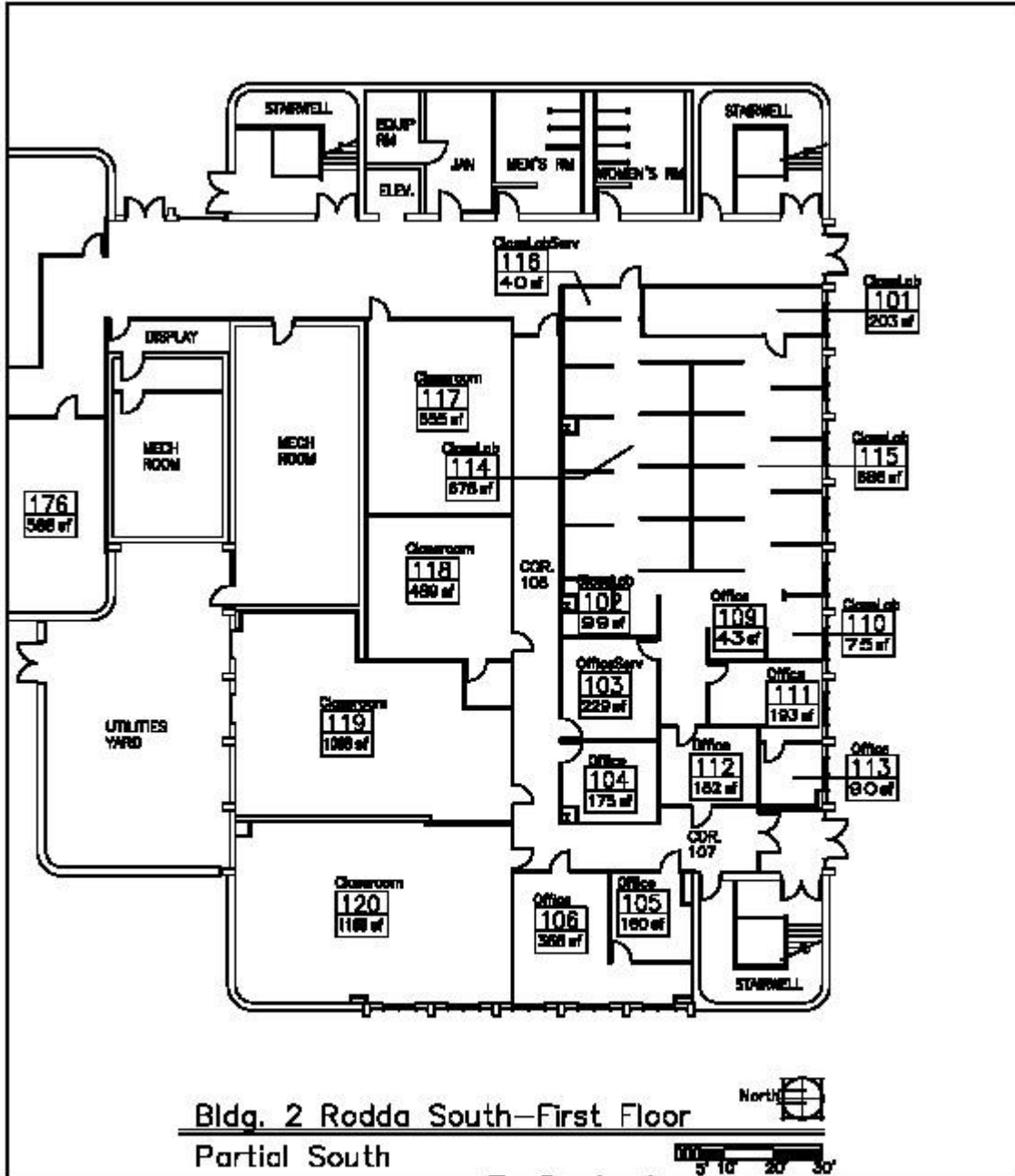
- FFA** Fishbacker Fine Arts Building
Gregory Kondas Art Gallery, Art classes & Studios
- HSP** Hoos Swimming Pool
KHA (Kinesiology, Health and Athletics) classes, Intercollegiate Swimming and Water Polo
- HUS** Hughes Stadium (under construction until Aug. 2012)
- LIH** Lillard Hall
Science classes
- LRC** Learning Resource Center
First Floor: Distance Education and Instructional Development, Instruct. Media and Computing, Media Production & Services, Learning Skills and Tutoring Center, Staff Resource Center -106
Second Floor: Library, Library Reference Desk
Third Floor: Special Collections Room (Archives)
- LRP** Los Rios Police Department
Staff parking permits, lost and found, crime reports, Live Scan fingerprinting, bicycle and property registration
- LUC** Lusk Center
Engineering and Math Classes, Mechanical-Electrical Technology Department
- MOH** Mohr Hall
Mohr Hall Lab, Nursing Department - 10, Occupational Therapy Department, Science & Allied Health Division - 18
- NOG** North Gymnasium
Life Fitness Center
- OPS** Operations
Keys and Employee IDs

- PAC** Performing Arts Center
Art Court Theatre, Little Theatre, Main Stage
- PAB** Parking Structure
- REP** Reprographics
Duplicating, Graphic Impressions
- RHM** Rodda Hall - North
First floor: Admissions & Records, Business Services Office, Dean of Counseling and Student Success - 111, EOPSCARE, Financial Aid, Information & Orientation, Counseling Area: Career Center, Counseling, Health Center, International Student Center, Transfer Center, Work Experience.
Second Floor: Behavioral and Social Sciences Division - 224, Vice President of Administrative Services - 209, Vice President of Instruction - 257, Vice President of Student Services - 272, College Advancement/Scholarships/Foundation - 222, Planning, Research & Institutional Effectiveness - 221, Presidents & Public Information Offices - 277
Third Floor: Photography Department & Studio
- RHS** Rodda Hall - South
First Floor: Dental Clinic, Math Lab, MEBA, Math Classrooms, Math Faculty Offices
Second Floor: Language & Literature Division
Third Floor: ESL Center, Reading Lab
Fourth Floor/Rooftop: Observatory
- SOC** Softball Complex
- STC** Student Center
Cultural Awareness Center
- SOG** South Gymnasium
Associated Student Government - 228, Humanities & Fine Arts Division - 129, Math, Statistics & Engineering Division - 220, Metaculaton, AV
President of Enrollment and Student Services - 225, Student Leadership & Development - 226
- STB** Student Services
Assessment Center
- TEC** Technology
Mac CAD Lab, GCOM classes
- T01** Temporary 1 classrooms
- T02** Temporary 2 classrooms
- T03** Journalism Department & classrooms
- T04** Temporary 4 classrooms
- T05** Temporary 5 classrooms
- T06** Temporary 6 classrooms
- T07** Temporary 7 classrooms
- T08** Temporary 8 classrooms
- T09** Temporary 9 classrooms
- T10** Temporary 10 classrooms
- T11** Temporary 11 classrooms
- UNS** Union Stadium
- VEC** Vehicle Compound
- WOC** West Sac. Outreach Center
1115 West Capitol Ave., West Sacramento, CA 95801



SCC - July 2012

Candidate Examination/Treatment Area EXAMINER AREA ONLY



SCALE 1" = 20'-0"		TITLE SCC-RODDA SOUTH-BLDG.2-PARTIAL SOUTH	
DATE 4/04/11	DRAWN SG	LOS RIOS COMMUNITY COLLEGE DISTRICT FACILITIES MANAGEMENT ENGINEERING AND PLANNING	
PROJECT FACILITIES SPACE INVENTORY			